



# Service Manual

## Du f m B c l On-The-Go (S/N starting from TL)

**SKU:** JBLPARTYBOXOTGAS, JBLPARTYBOXOTGAS2, JBLPARTYBOXOTGAS3, JBLPARTYBOXGOBBER, JBLPARTYBOXGOBBER2, JBLPARTYBOXGOBCN, JBLPARTYBOXOTGEU, JBLPARTYBOXOTGRU, JBLPARTYBOXOTGUK, JBLPARTYBOXGOBAM



## CONTENTS

Technical Specifications	2
Safety Instruction, Warning & Notes	3
Software Upgrade Procedure	6
Trouble shooting	7
Dismantling Instruction	9
Set Block Diagram & Wiring Diagram	16
Schematic & Layout Diagrams	19
Set Mechanical Exploded View	38
Packaging Exploded View	39
Spare Parts List	40
Revision List	42

## TECHNICAL SPECIFICATIONS :

- Product name: PARTYBOX ON-THE-GO
- AC power input: 100 - 240 V ~ 50/60 Hz
- Built-in Battery: 18 Wh
- Power consumption: 60 W
- Total output power: 100 W RMS
- Standby power consumption: < 2 W with BT Connection; < 0.5 W without BT Connection
- USB output: 5 V 2.1 A
- Speaker drivers: 1 x 5.25 in (133 mm) woofers + 2 x 1.75 in (44 mm) tweeters
- Signal-to-noise (S/N) ratio: > 80 dBA
- Frequency response: 50 Hz - 20 kHz
- Battery charge time: < 3.5 hrs
- Battery play time: > 6 hrs
- Bluetooth version: 4.2
- Bluetooth profile: A2DP v1.3, AVRCP v1.6
- Bluetooth transmitter frequency range: 2.4 - 2.48 GHz
- Bluetooth maximum transmitter power: 10 dBm (EIRP)
- Bluetooth transmitter modulation: GFSK,  $\pi/4$  DQPSK, 8DPSK
- Bluetooth range: Approx. 10 m (33 ft)
- USB format: FAT 16, FAT 32
- USB file format: .mp3, .wma, .wav
- Digital input: Bluetooth / USB -9 dBFS
- Input sensitivity: AUX in: 370 mV rms Microphone: 20 mV rms Guitar: 100 mV rms
- Product Dimension (W x H x D): 490 x 245 x 228 mm / 19.3 x 9.6 x 9.0 in
- Net weight: 7.5 kg / 16.5 lbs

### Wireless microphone specification:

- Frequency response: 65 Hz - 15 kHz
- Signal-to-noise (S/N) ratio: > 60 dBA
- UHF frequency band: 470 ~ 960 MHz (depends on SKU) (EU 657 ~ 662 MHz)
- Transmitter transmitting power: < 10 mW
- Microphone battery play time: < 10 hrs
- Distance between transmitter and receiver: < 10 m

## Important Safety Instructions

1. Read these instructions.
2. Keep these instructions.
3. Heed all warnings.
4. Follow all instructions.
5. Do not use this apparatus near water.
6. Clean only with a dry cloth.
7. Do not block any ventilation openings. Install in accordance with the manufacturer's instructions.
8. Do not install near any heat sources such as radiators, heat registers, stoves or other apparatus (including amplifiers) that produce heat.
9. Do not defeat the safety purpose of the polarized or grounding-type plug. A polarized plug has two blades with one wider than the other. A grounding-type plug has two blades and a third grounding prong. The wide blade or the third prong is provided for your safety. If the provided plug does not fit into your outlet, consult an electrician for replacement of the obsolete outlet.
10. Protect the power cord from being walked on or pinched, particularly at plugs, convenience receptacles and the point where they exit from the apparatus.
11. Only use attachments/accessories specified by the manufacturer.
12. Use only with the cart, stand, tripod, bracket or table specified by the manufacturer or sold with the apparatus. When a cart is used, use caution when moving the cart/apparatus combination to avoid injury from tip-over.
13. Unplug this apparatus during lightning storms or when unused for long periods of time.
14. Refer all servicing to qualified service personnel. Servicing is required when the apparatus has been damaged in any way, such as power supply cord or plug is damaged, liquid has been spilled or objects have fallen into the apparatus, or the apparatus has been exposed to rain or moisture, does not operate normally or has been dropped.
15. Do not expose this apparatus to dripping or splashing and ensure that no objects filled with liquids, such as vases, are placed on the apparatus.
16. To completely disconnect this apparatus from the AC Mains, disconnect the power supply cord plug from the AC receptacle.
17. The mains plug of the power supply cord shall remain readily operable.
18. Do not expose batteries to excessive heat such as sunshine, fire or the like.



### CAUTION

RISK OF ELECTRIC SHOCK. DO NOT OPEN.



THE LIGHTNING FLASH WITH AN ARROWHEAD SYMBOL, WITHIN AN EQUILATERAL TRIANGLE, IS INTENDED TO ALERT THE USER TO THE PRESENCE OF UNINSULATED "DANGEROUS VOLTAGE" WITHIN THE PRODUCT'S ENCLOSURE THAT MAY BE OF SUFFICIENT MAGNITUDE TO CONSTITUTE A RISK OF ELECTRIC SHOCK TO PERSONS.



THE EXCLAMATION POINT WITHIN AN EQUILATERAL TRIANGLE IS INTENDED TO ALERT THE USER TO THE PRESENCE OF IMPORTANT OPERATING AND MAINTENANCE (SERVICING) INSTRUCTIONS IN THE LITERATURE ACCOMPANYING THE PRODUCT.

WARNING: TO REDUCE THE RISK OF FIRE OR ELECTRIC SHOCK, DO NOT EXPOSE THIS APPARATUS TO RAIN OR MOISTURE.

## For Products That Transmit and Receive RF Energy:

### FCC Regulations (USA Only)

#### FCC Information For Users

This device complies with Part 15 of the FCC Rules. Operation is subject to the following two conditions: (1) This device may not cause harmful interference; and (2) this device must accept any interference received, including interference that may cause undesired operation.

#### Radio and Television Interference

This equipment has been tested and found to comply with the limits for a Class B digital device, pursuant to Part 15 of the FCC Rules. These limits are designed to provide reasonable protection against harmful interference in a residential installation. This equipment generates, uses and can radiate radio frequency energy and, if not installed and used in accordance with the instructions, may cause harmful interference to radio communications. However, there is no guarantee that interference will not occur in a particular installation. If this equipment does cause interference to radio or television reception, which can be determined by turning the equipment off and then on, the user is encouraged to try to correct the interference by one or more of the following measures:

- Increase the separation between the equipment and receiver.
- Connect the equipment to a different outlet so that the equipment and receiver are on different branch circuits.
- Consult the dealer or an experienced radio/TV technician for help.

**NOTE:** Changes or modifications not expressly approved by Harman could void the user's authority to operate the equipment.

### IC Statement and Warning (Canada Only)

This Class B digital apparatus complies with Canadian ICES-003. Cet appareil numérique de la classe B est conforme à la norme NMB-003 du Canada.

#### For Canadian Model

This Class B digital apparatus complies with Canadian ICES-003.

#### Modèle pour les Canadien

Cet appareil numérique de la classe B est conforme à la norme NMB-003 du Canada.

## For Products with Radio Receivers That Can Use an External Antenna:

### CATV or Antenna Grounding

If an outside antenna or cable system is connected to this product, be certain that it is grounded so as to provide some protection against voltage surges and static charges. Section 810 of the National Electrical Code, ANSI/NFPA No. 70-1984, provides information with respect to proper grounding of the mast and supporting structure, grounding of the lead-in wire to an antenna discharge unit, size of grounding conductors, location of antenna discharge unit, connection to grounding electrodes and requirements of the grounding electrode.

### Note to CATV System Installer:

This reminder is provided to call the CATV (cable TV) system installer's attention to article 820-40 of the NEC, which provides guidelines for proper grounding and, in particular, specifies that the cable ground shall be connected to the grounding system of the building, as close to the point of cable entry as possible.

### For CD/DVD/Blu-ray Disc™ Players:

CLASS 1 LASER PRODUCT  
KLASSE 1 LASER PRODUKT  
LUOKAN 1 LASER LAITE  
KLASS 1 LASER APPARAT  
CLASSE 1 PRODUIT LASER

#### Caution:

This product uses a laser system. To prevent direct exposure to the laser beam, do not open the cabinet enclosure or defeat any of the safety mechanisms provided for your protection. DO NOT STARE INTO THE LASER BEAM. To ensure proper use of this product, please read the owner's manual carefully and retain it for future use. Should the unit require maintenance or repair, please contact your local Harman Kardon service center. Refer servicing to qualified personnel only.

## For Products That Include Batteries:



### Instructions for Users on Removal and Disposal of Used Batteries.

#### CAUTION

**Risk of explosion if battery is incorrectly replaced. Replace only with the same or equivalent type.**

Alkaline batteries are considered nonhazardous. Rechargeable batteries (i.e., nickel cadmium, nickel metal-hydride, lithium and lithium-ion) are considered hazardous household materials and may pose an unnecessary health and safety risk.

In the European Union and other locations, it is illegal to dispose of any battery with household trash. All batteries must be disposed of in an environmentally sound manner. Contact your local waste management officials for information regarding the environmentally sound collection, recycling and disposal of used batteries.

To remove the batteries from your equipment or remote control, reverse the procedure described for inserting batteries in the owner's manual.

For products with a built-in battery that lasts for the lifetime of the product, removal may not be possible for the user. In this case, recycling or recovery centers handle the dismantling of the product and the removal of the battery. If, for any reason, it becomes necessary to replace such a battery, this procedure must be performed by authorized service centers.

## ELECTROSTATICALLY SENSITIVE (ES) DEVICES

Some semiconductor (solid state) devices can be damaged easily by static electricity. Such components commonly are called Electrostatically Sensitive (ES) Devices. Examples of typical ES devices are integrated circuits and some field effect transistors and semiconductor "chip" components.

The following techniques should be used to help reduce the incidence of component damage caused by static electricity.



1. Immediately before handling any semiconductor component or semiconductor-equipped assembly, drain off any electrostatic charge on your body by touching a known earth ground. Alternatively, obtain and wear a commercially available discharging wrist strap device, which should be removed for potential shock reasons prior to applying power to the unit under test.
2. After removing an electrical assembly equipped with ES devices, place the assembly on a conductive surface such as aluminum foil, to prevent electrostatic charge build-up or exposure of the assembly.
3. Use only a grounded-tip soldering iron to solder or unsolder ES devices.
4. Use only an anti-static solder removal device. Some solder removal devices not classified as "anti-static" can generate electrical charges sufficient to damage ES devices.
5. Do not use freon-propelled chemicals. These can generate electrical charge sufficient to damage ES devices.
6. Do not remove a replacement ES device from its protective package until immediately before you are ready to install it. (Most replacement ES devices are packaged with leads electrically shorted together by conductive foam, aluminum foil or comparable conductive material.)
7. Immediately before removing the protective material from the leads of a replacement ES device, touch the protective material to the chassis or circuit assembly into which the device will be installed.

**CAUTION :** Be sure no power is applied to the chassis or circuit, and observe all other safety precautions.

8. Minimize bodily motions when handling unpackaged replacement ES devices. (Otherwise harmless motion such as the brushing together of your clothes fabric or the lifting of your foot from a carpeted floor can generate static electricity sufficient to damage an ES devices.

## PRODUCT SAFETY NOTICE

Each precaution in this manual should be followed during servicing.

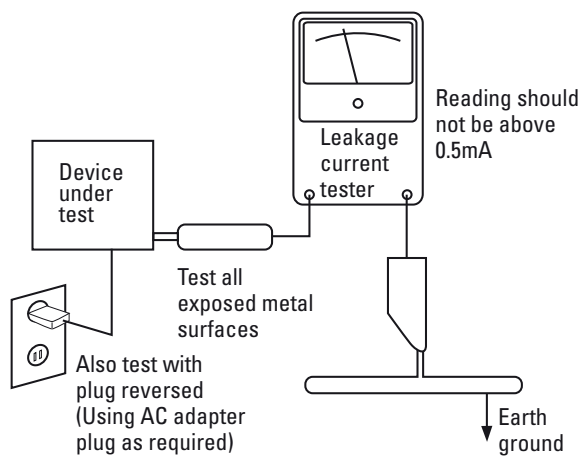
Components identified with the IEC symbol  in the parts list are of special significance to safety. When replacing a component identified with , use only the replacement parts designated, or parts with the same ratings or resistance, wattage, or voltage that are designated in the parts list in this manual. Leakage-current or resistance measurements must be made to determine that exposed parts are acceptably insulated from the supply circuit before returning the product to the customer.

## SAFETY PRECAUTIONS

The following check should be performed for the continued protection of the customer and service technician.

### LEAKAGE CURRENT CHECK

Measure leakage current to a known earth ground (water pipe, conduit, etc.) by connecting a leakage current tester between the earth ground and all exposed metal parts of the appliance (input/output terminals, screwheads, metal overlays, control shaft, etc.). Plug the AC line cord of the appliance directly into a 120V AC 60Hz outlet and turn the AC power switch on. Any current measured must not exceed 0.5mA.



### AC Leakage Test

**ANY MEASUREMENTS NOT WITHIN THE LIMITS OUTLINED ABOVE ARE INDICATIVE OF A POTENTIAL SHOCK HAZARD AND MUST BE CORRECTED BEFORE RETURNING THE APPLIANCE TO THE CUSTOMER.**

## SOFTWARE UPGRADE PROCEDURE

### USB update method

1. Copy software to an empty USB(named as PBGT\_FW\_XXXXXXX\_VerXXXXXX.bin,such as PBGT\_ALL\_202101290\_Ver09.bin or PBGT\_ALL\_202102220\_Ver10.bin)
2. Set power on
3. Press volume+ & Bluetooth key over 10 sec at same time, Set will enter DFU mode, and LED will show RED

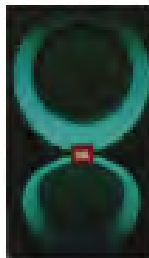


4. Insert USB
5. Set will auto update and LED show white for percentage(Attention : Don't pull out USB and AC power during update)



Attention: Don't Pull out USB and AC power during update

6. Wait for about 10~15 sec, If LED show green indication update finished, Please pull out USB, set will auto power off.



### Restore factory setting

1. Turn on the machine, make sure it is working
2. Press and hold the "Play" key and "Vol+" key for 10s to restore factory setting.
3. The machine all LEDs will light on for 2 seconds after restore successfully and then restart automatically.

### Check software version

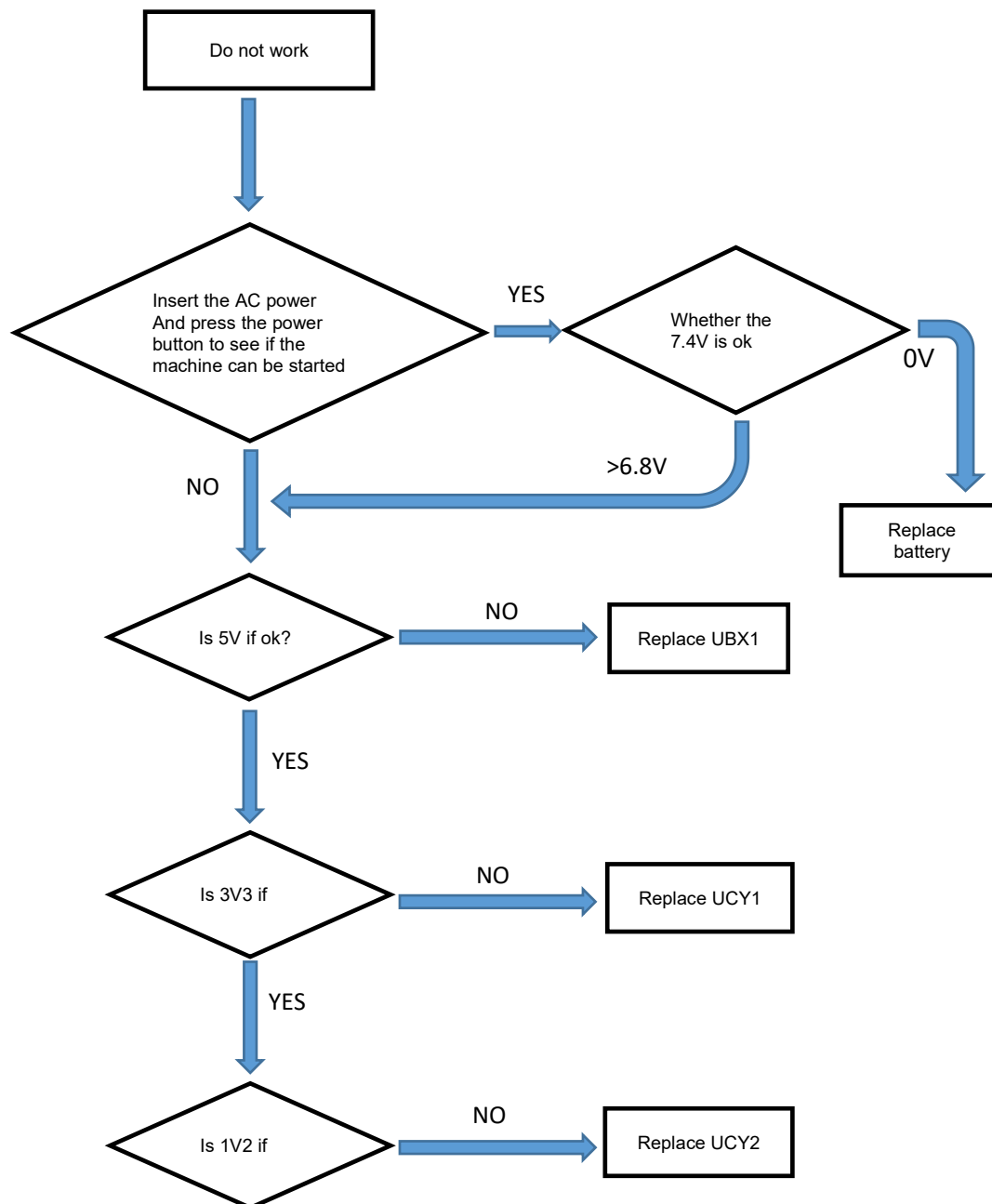
1. Turn on the machine, make sure it is working
2. Press and hold the "BASS BOOST" key and "Vol-" key for 2s to check the software version.

## TROUBLE SHOOTING

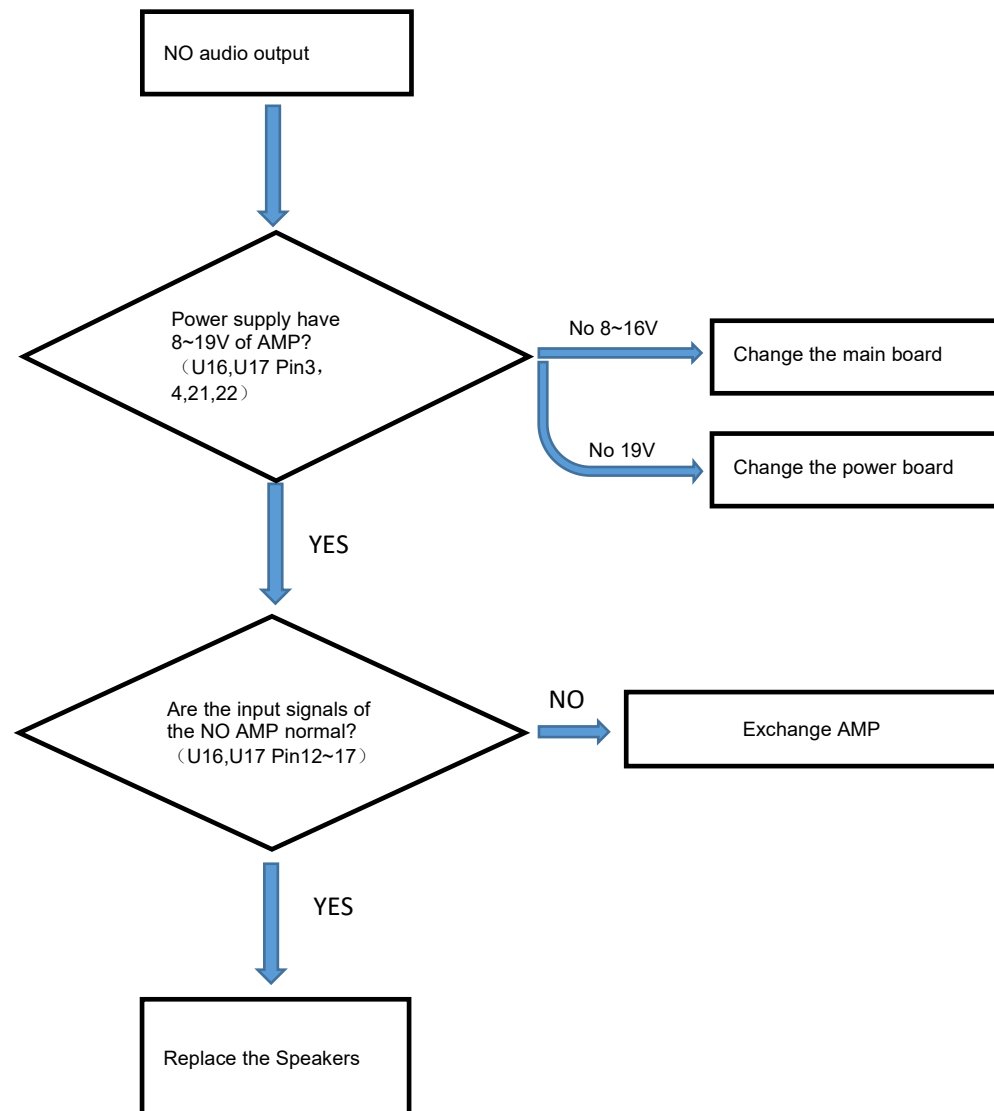
Oscilloscope Setting Values	Check DC voltage	Check I <sub>2</sub> C& I <sub>2</sub> S signal	check PWM signal	Check L+,L- signal
Voltage/DIV	Depend voltage	1V/div	10V/div	10V/div
TIME/DIV	500ms/div	20us/div	1us/div	500us/div

1. If press the power button, the device does not work, Please check the power flow as blow:

1 )



## 2 .No audio output





Tool list

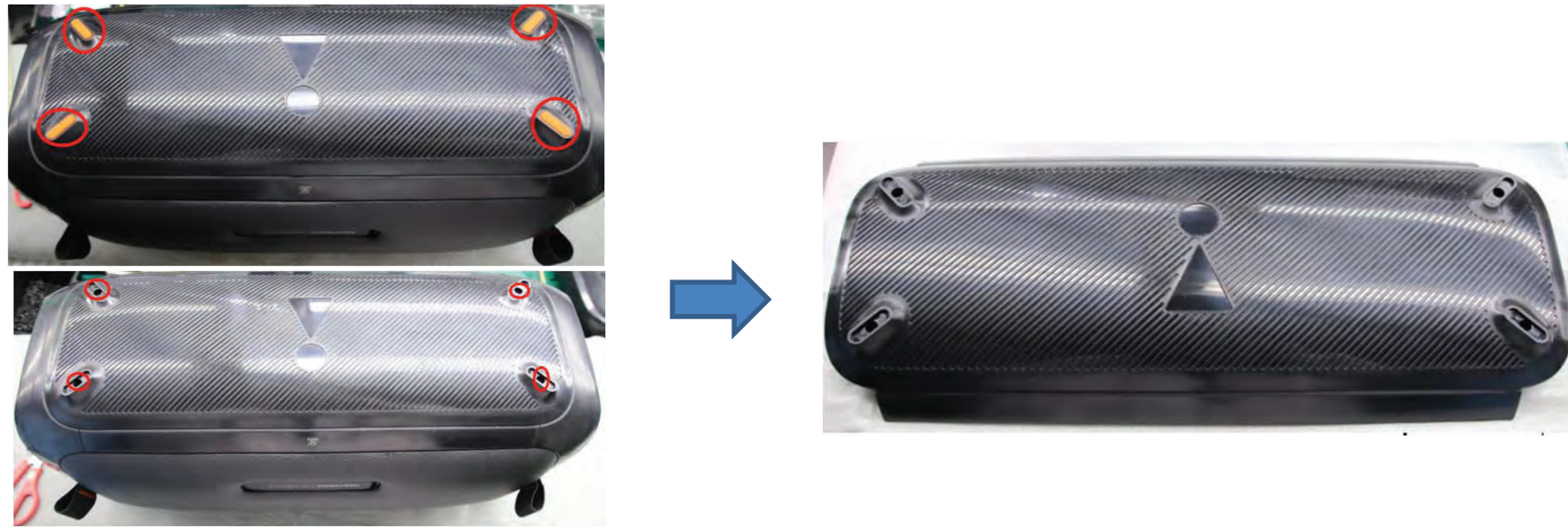
Item	Description	Remark
1	Screw driver	
2	Screw driver	
3	Knife	“-”type knife(wrapped by tape)
4	Elcetrical screw driver	
5	Needle	



## DISMANTLING INSTRUCTION

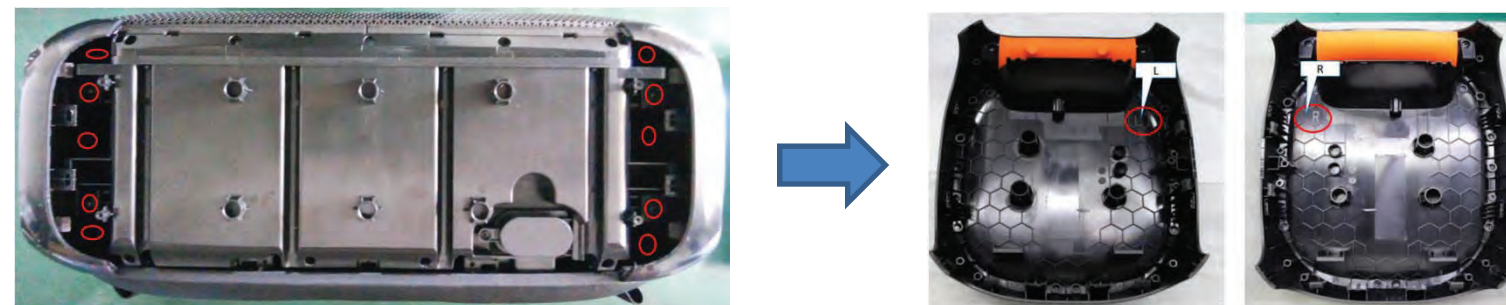
### 1.Dismantling bottom cover:

Remove the bottom foot pad 4pcs by a needle, dismantle 4 pcs screws accordingly, and then take out bottom cover.



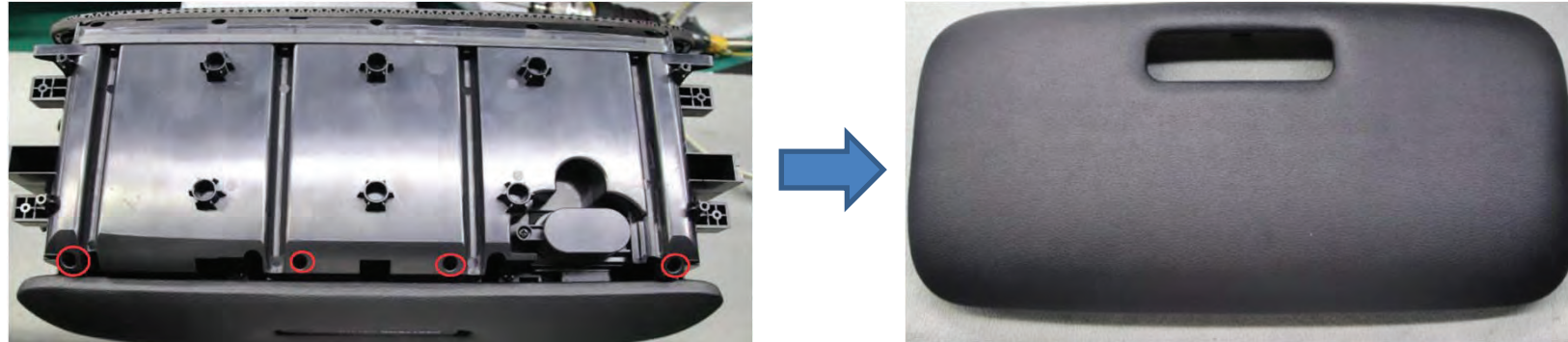
### 2.Dismantling L/R side cover:

Remove 10 pcs screws on the L/R side cover accordingly, and then take out L/R side cover.



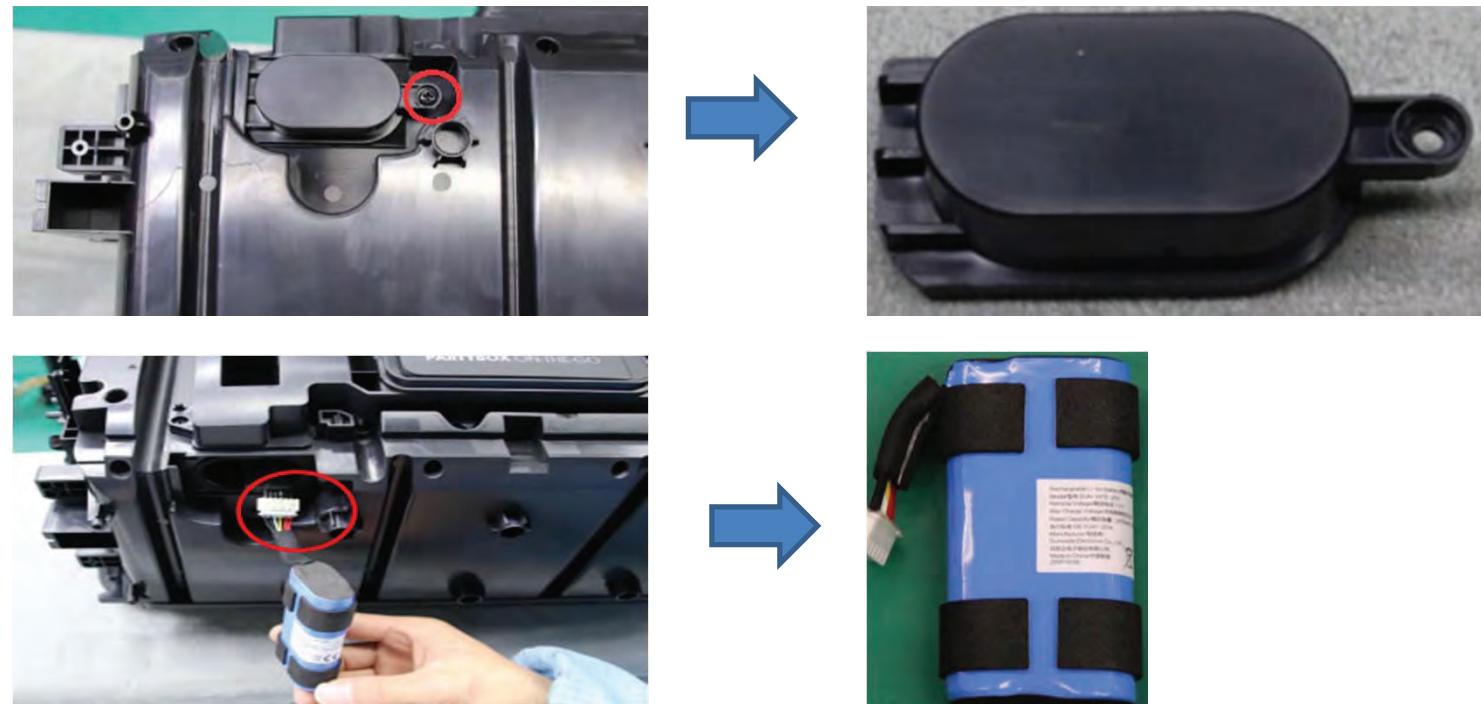
### 3.Dismantling PVC stent:

Dismantle 4pcs screw accordingly, and take out the top cover



### 4.Dismantling battery cover and battery:

Dismantle 1pc screw, and take out the battery cover;  
Unplug a cable, and take out the battery.

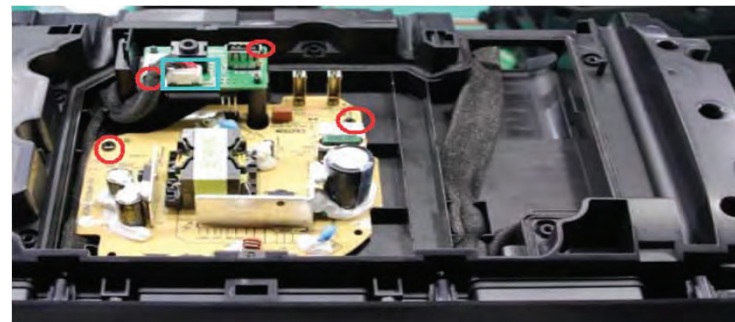
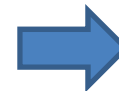
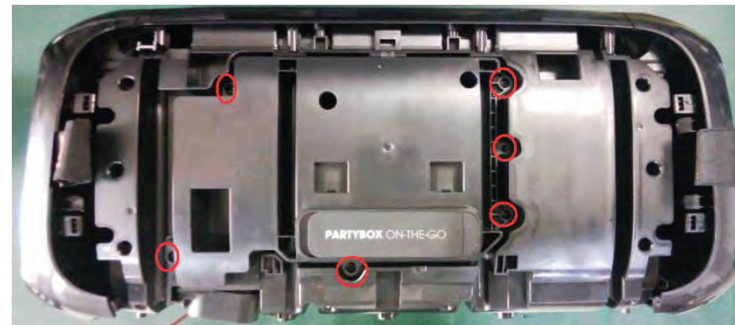




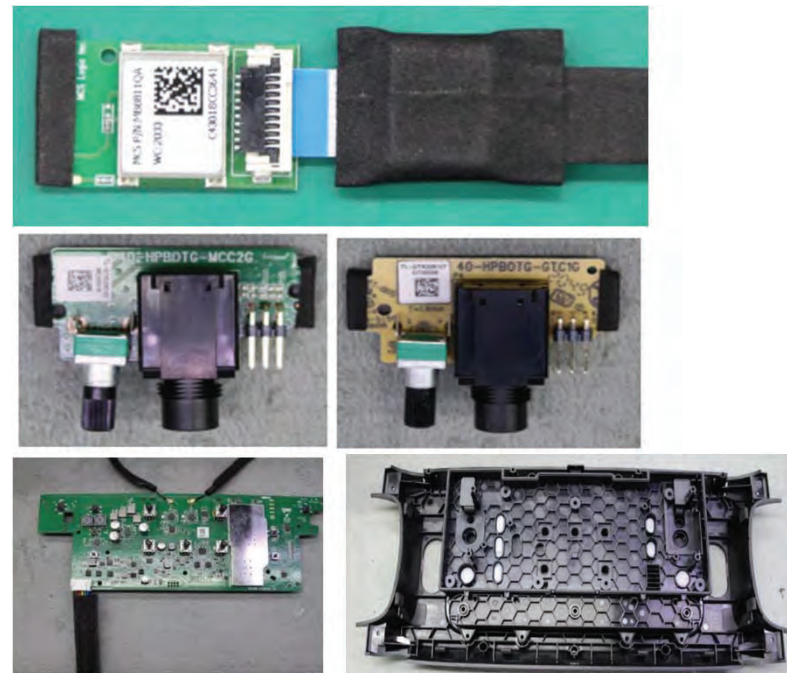
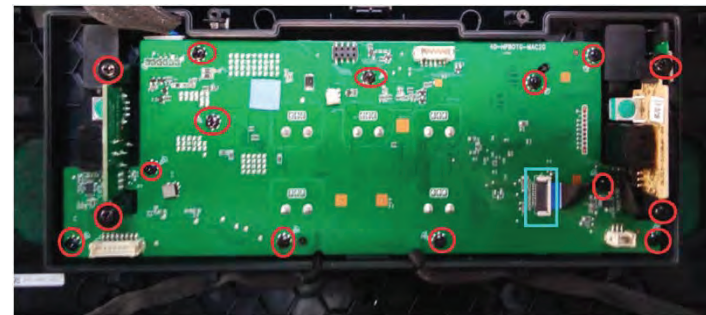
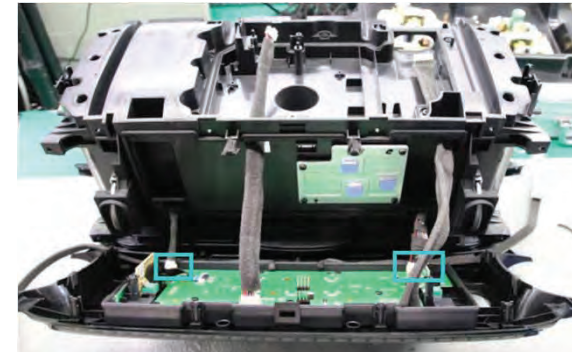
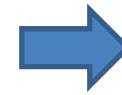
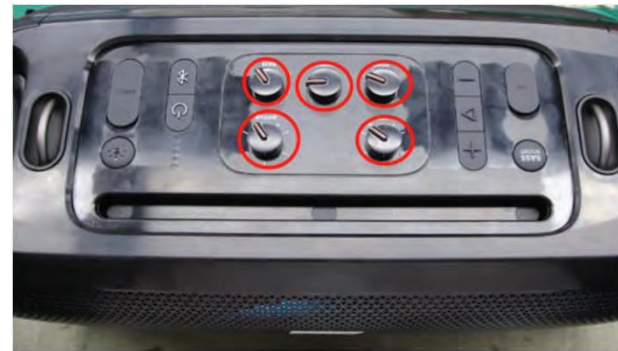
5. Dismantling power board cover, power board and audio board:

Dismantle 6pcs screw, and take out power board cover;

Dismantle 4pcs screw, unplug a cable, and take out power board, audio board.



6.Dismantling top cover、 main board、 wireless module、 guitar board and MIC board:  
Pull out 5 knobs on the top cover, and unplug 2 cables;  
Dismantle 15pcs screw, unplug a cable, and take out main board、 wireless module、 guitar board and MIC board.



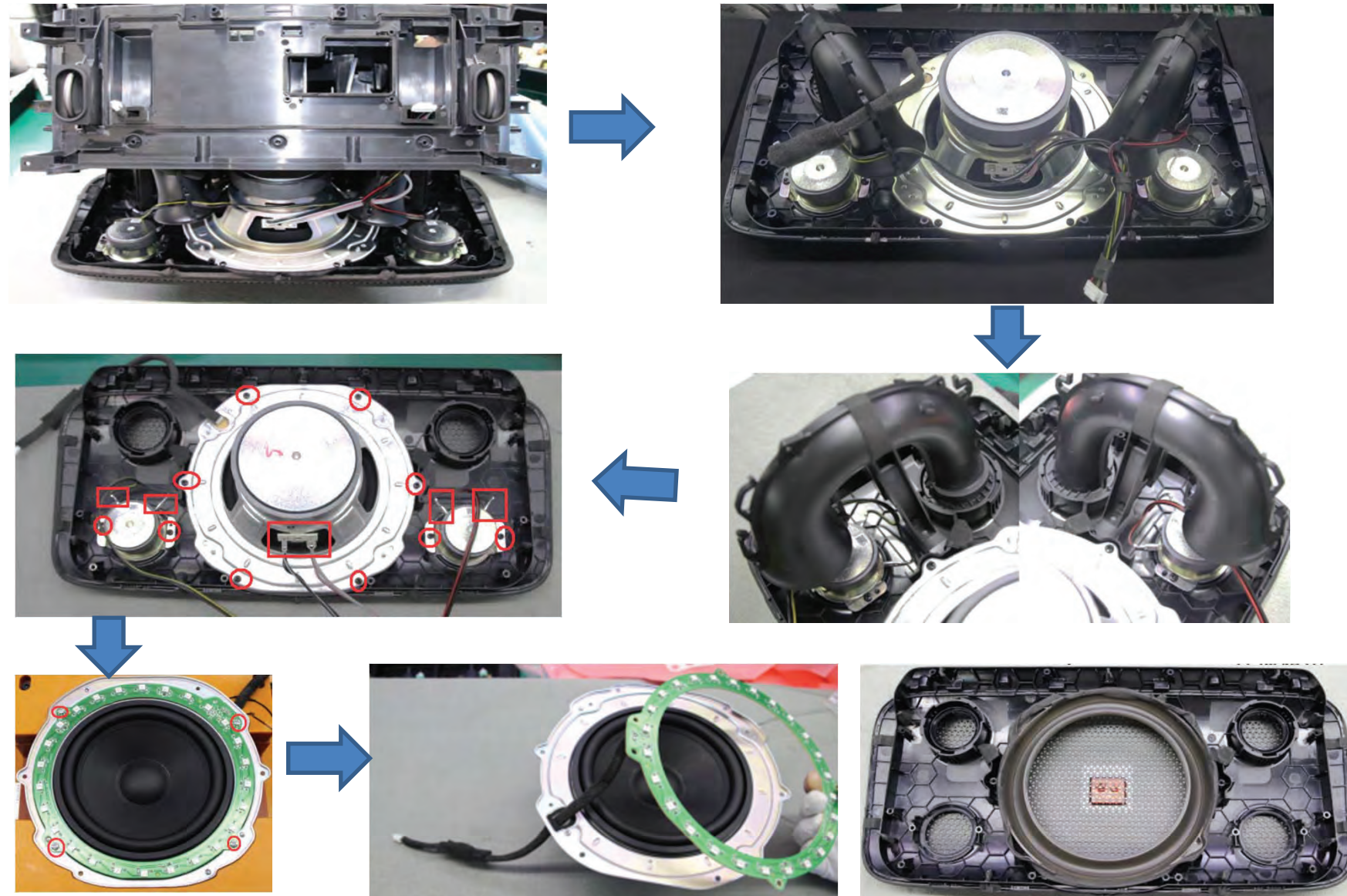


## 7.Dismantling duct ASSY、 speaker、 lamb ring and front grille ASSY

Pull out grille ASSY, and take out duct;

Dismantle 10pcs screws, unplug 6 cables, and take out speaker;

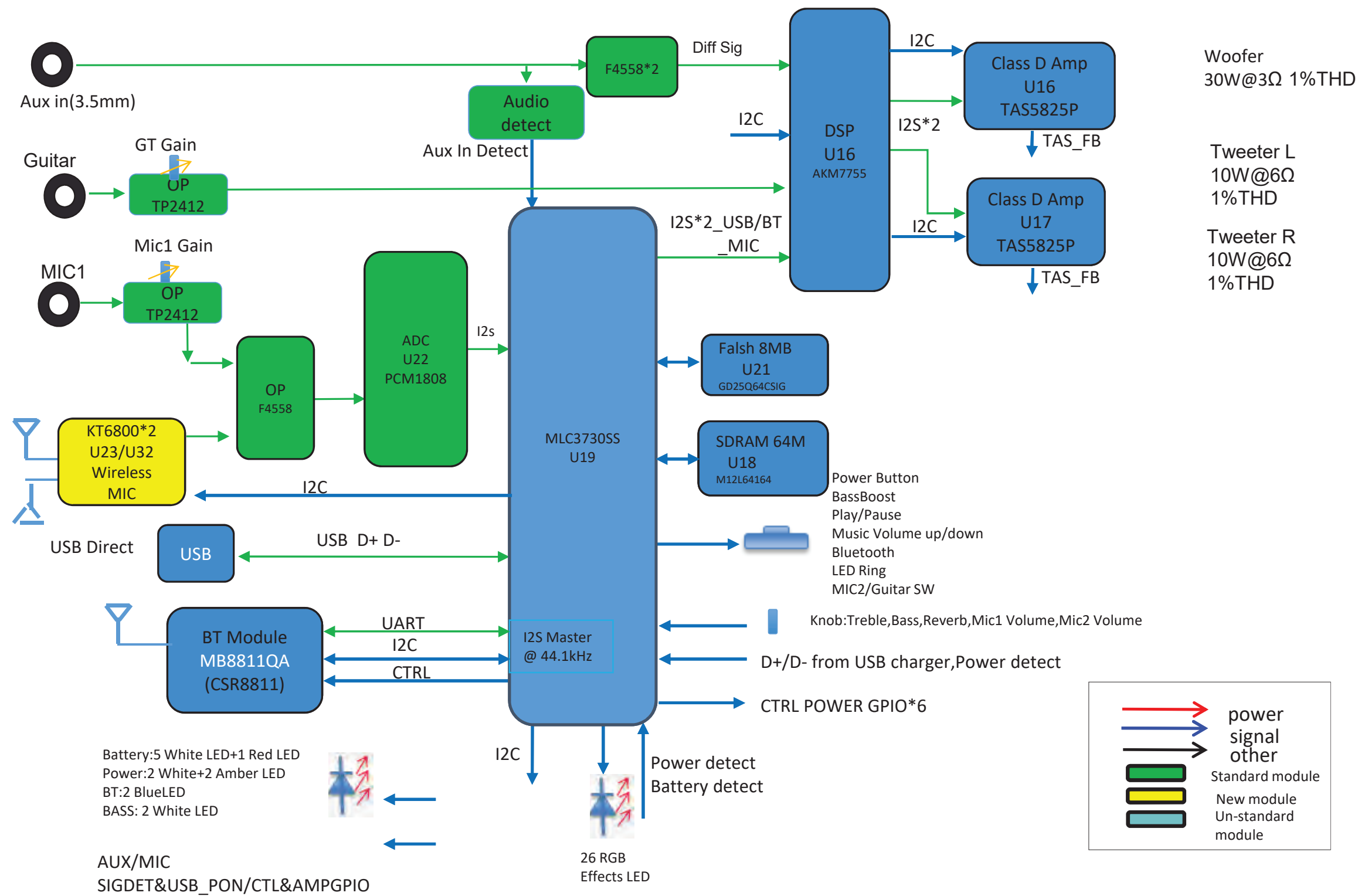
Dismantle 4pcs screws, take out lamb ring.



Potential scrap risk on materials

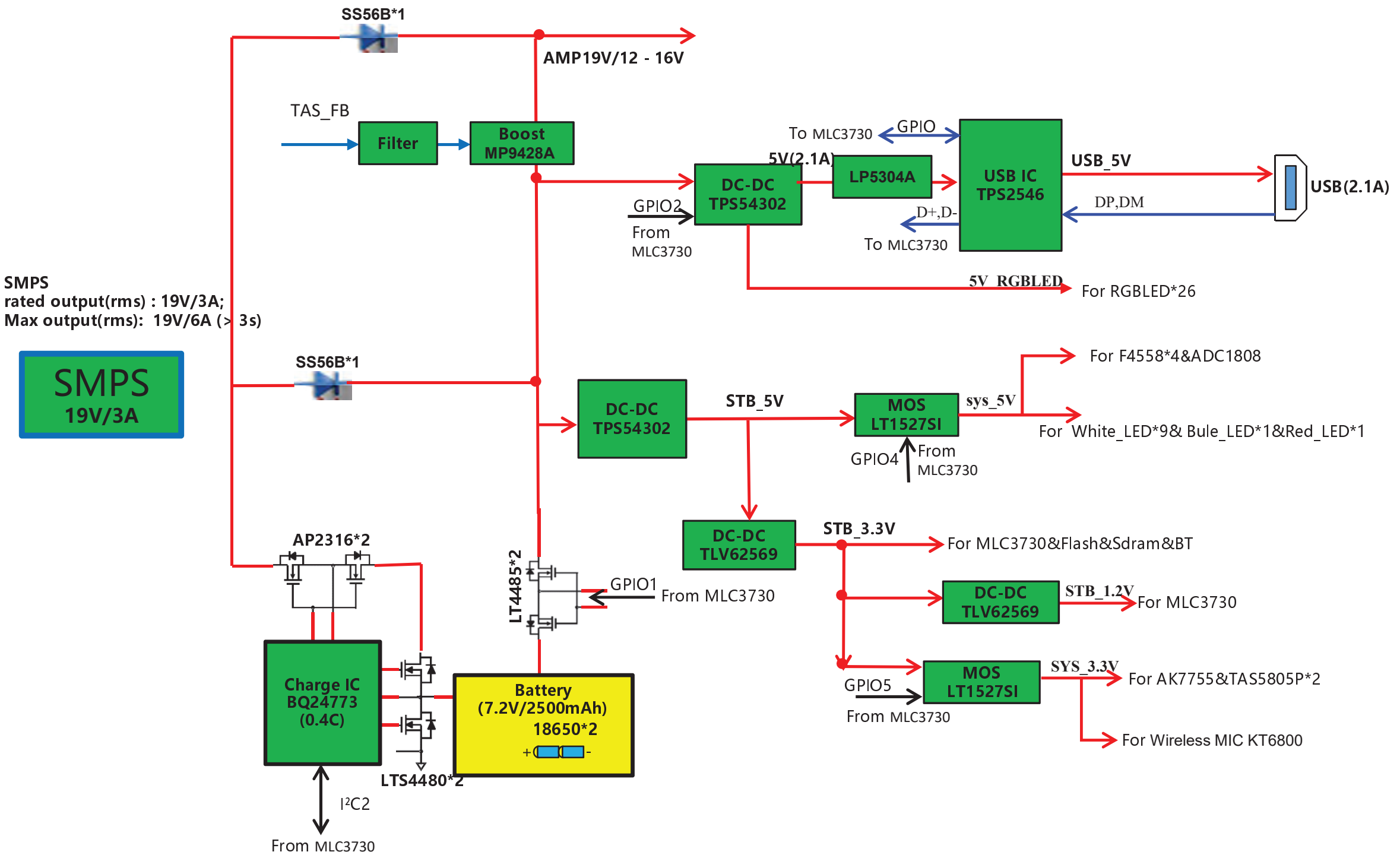
Process step	Material	Part Number
Step1	Foot pad	Please refer to the SBOM
Step 6	Rubber button	Please refer to the SBOM

BLOCK DIAGRAM

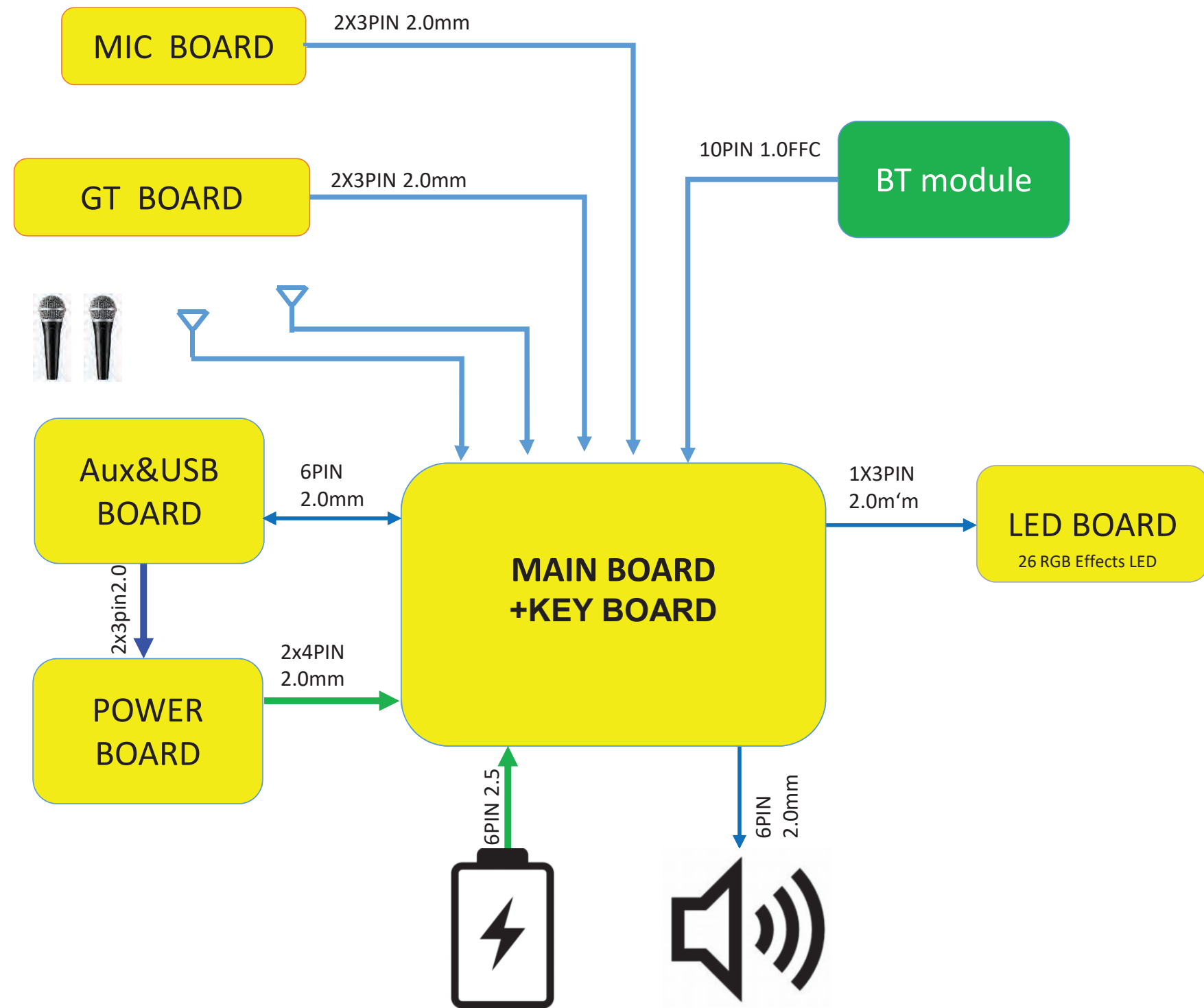




POWER BLOCK DIAGRAM



## WRITING DIAGRAM





CIRCUIT DIAGRAM - MAIN BOARD

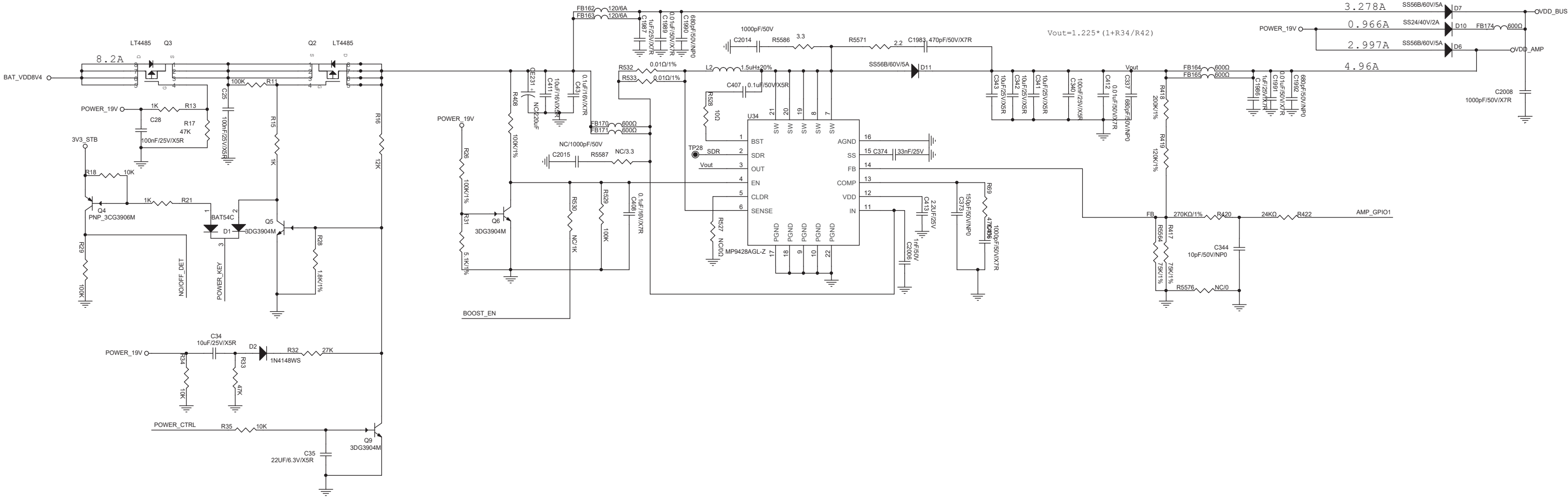
AMP\_GPIO1 >> \_\_\_\_\_

POWER\_CTRL >> \_\_\_\_\_

NO/OFF\_DET << \_\_\_\_\_

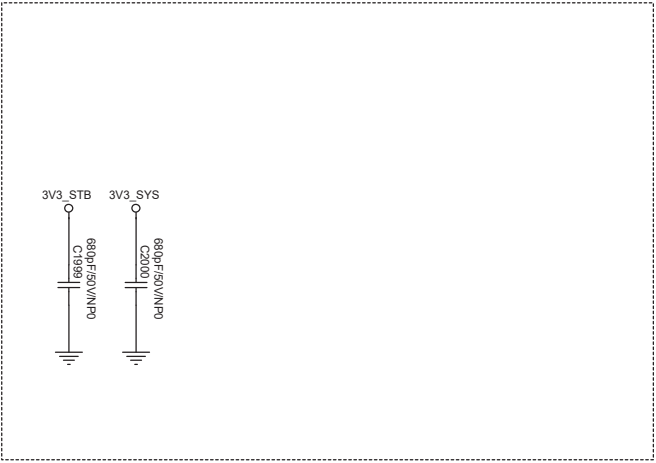
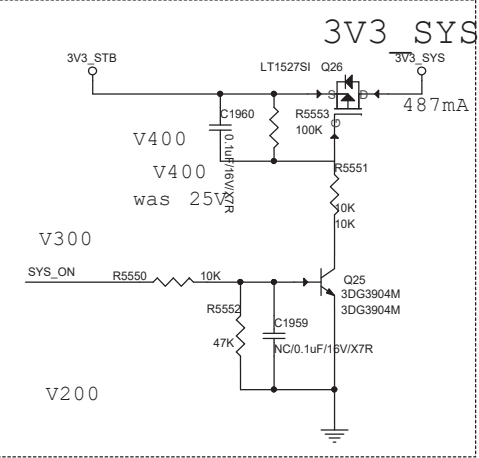
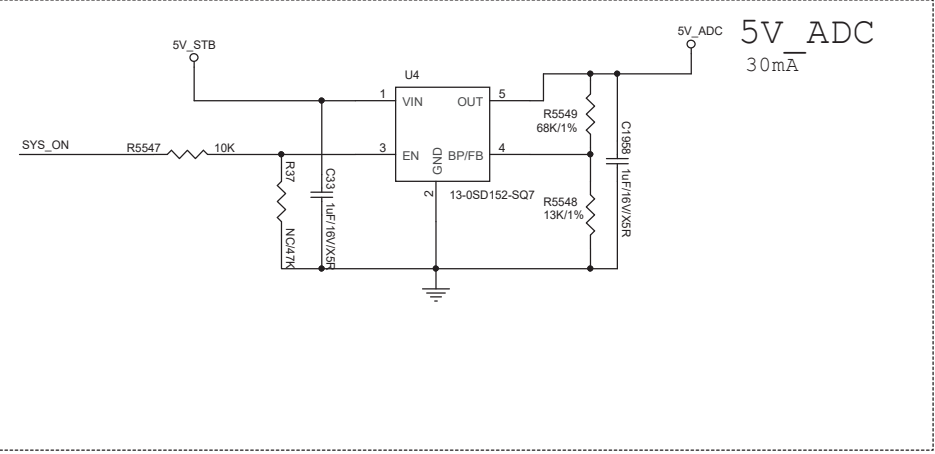
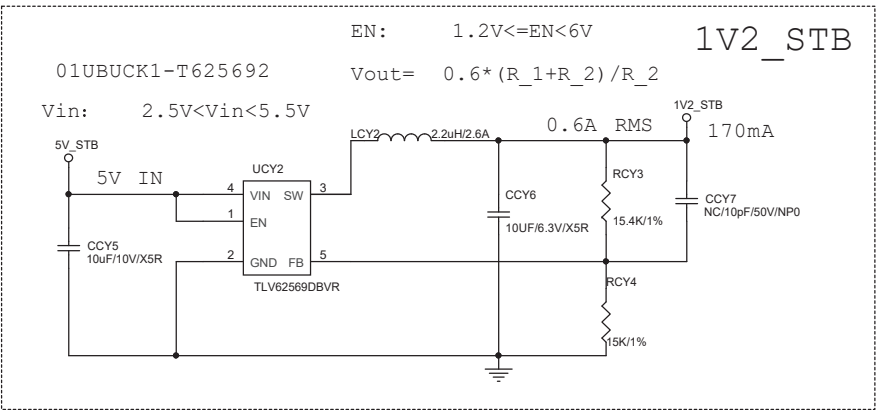
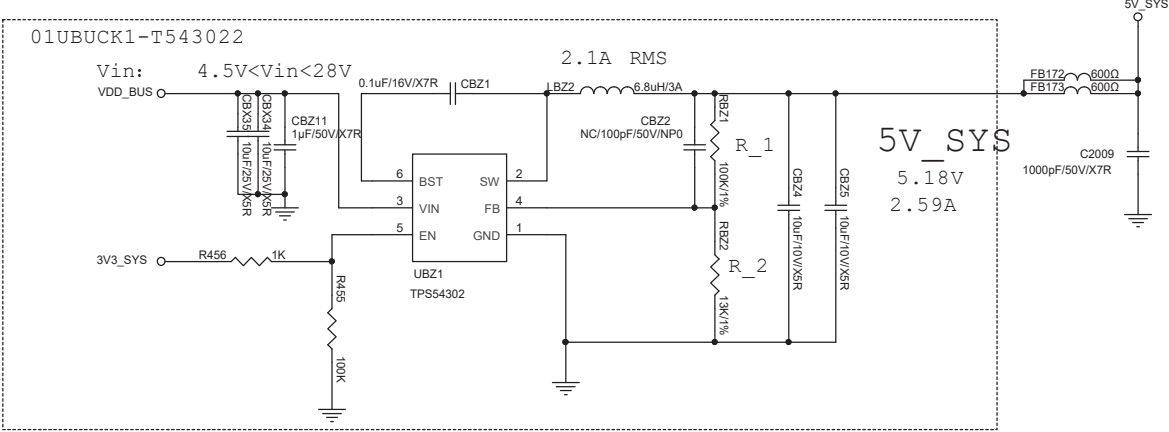
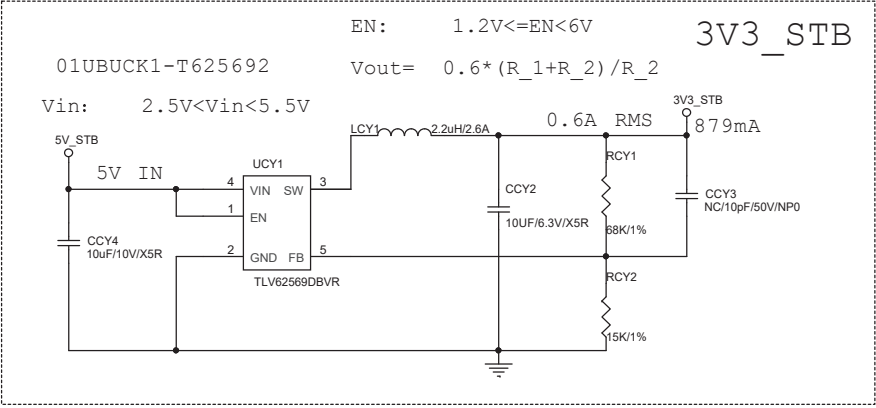
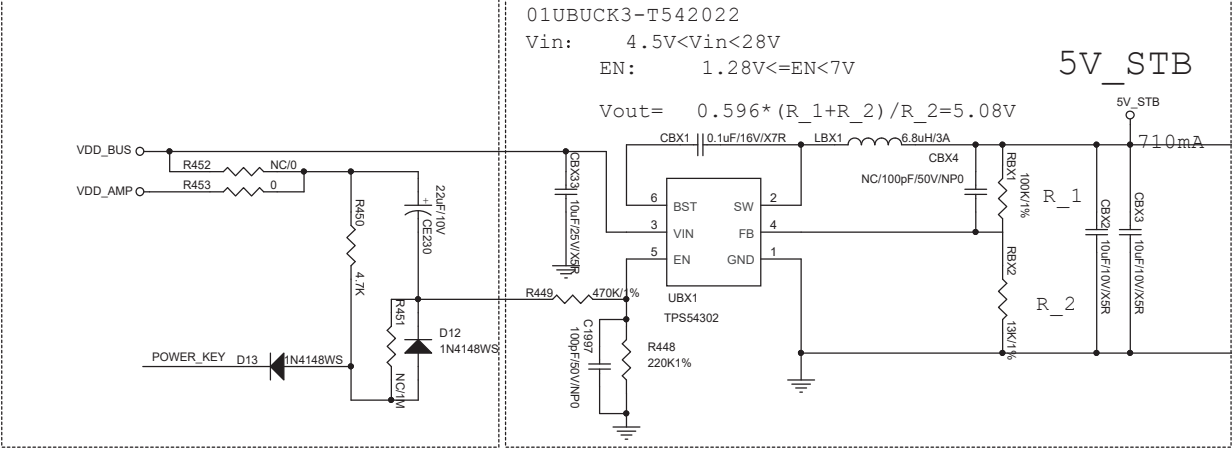
POWER\_KEY >> \_\_\_\_\_

BOOST\_EN >> \_\_\_\_\_



CIRCUIT DIAGRAM - MAIN BOARD

POWER\_KEY >>  
SYS\_ON >>



# CIRCUIT DIAGRAM - MAIN BOARD

1

2

3

4

AMP/TAS5825

DSP/AK7755

ADC\_PCM1808

USB

KEY DET

VR\_AD (VOLD)

change BQ24773

LED\_CTL AW9523B

MIC&WMIC

POWER

AUX

close to SOC

Debug

A

B

C

D

E

# CIRCUIT DIAGRAM - MAIN BOARD

1

2

3

4

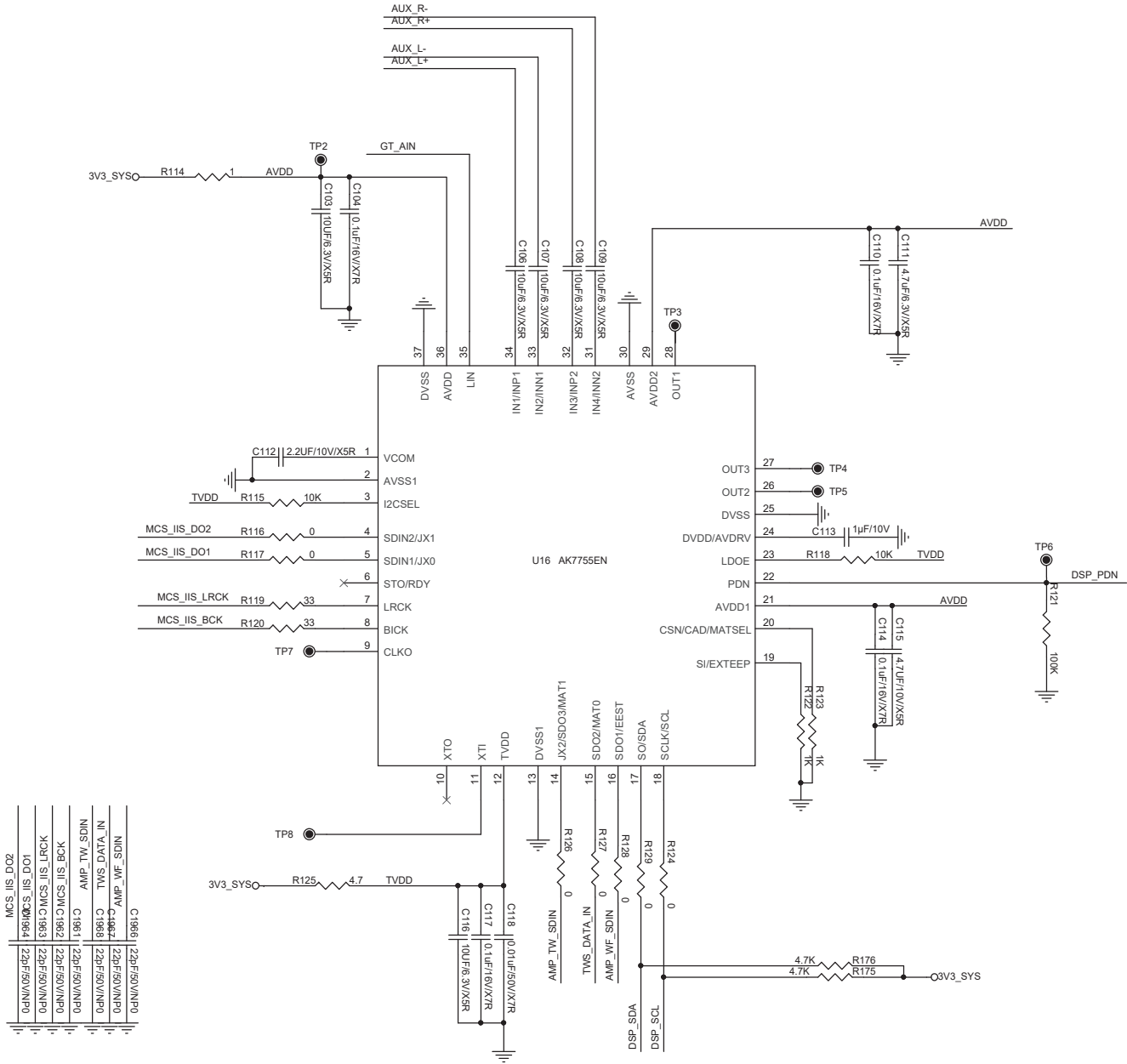
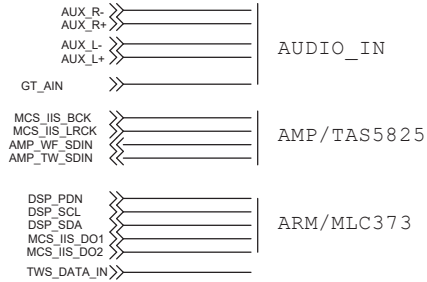
SDRAM\_64Mb\_M12L128168A-6T

AW9523B

WQBZ-S-2

PBZ\_MLC3730

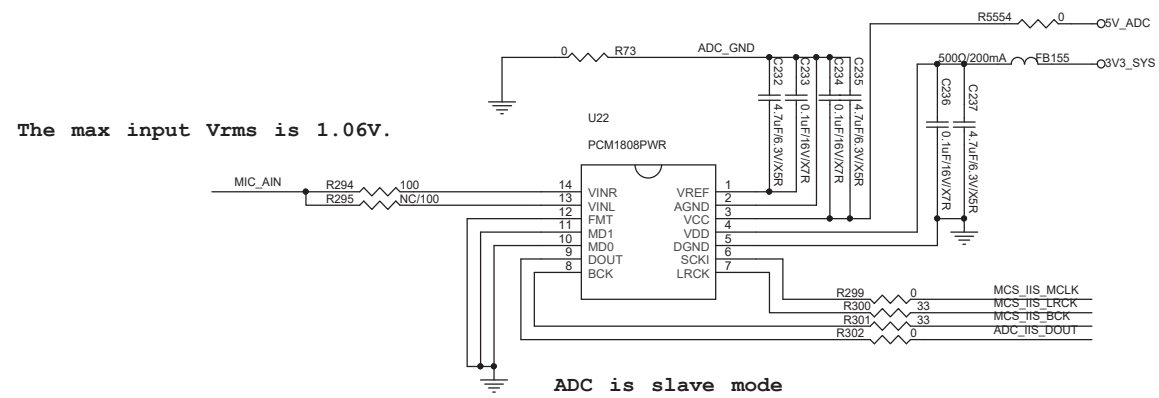
CIRCUIT DIAGRAM - MAIN BOARD



## CIRCUIT DIAGRAM - MAIN BOARD

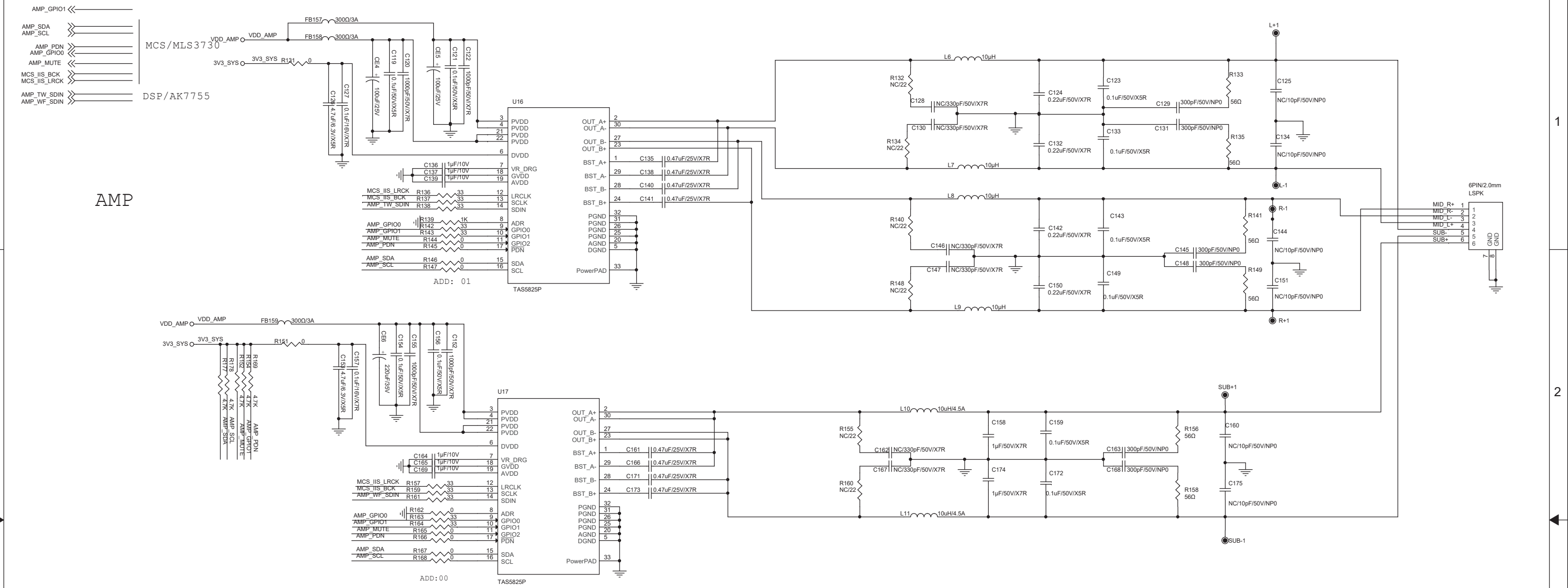


MIC\_AIN      >>—————

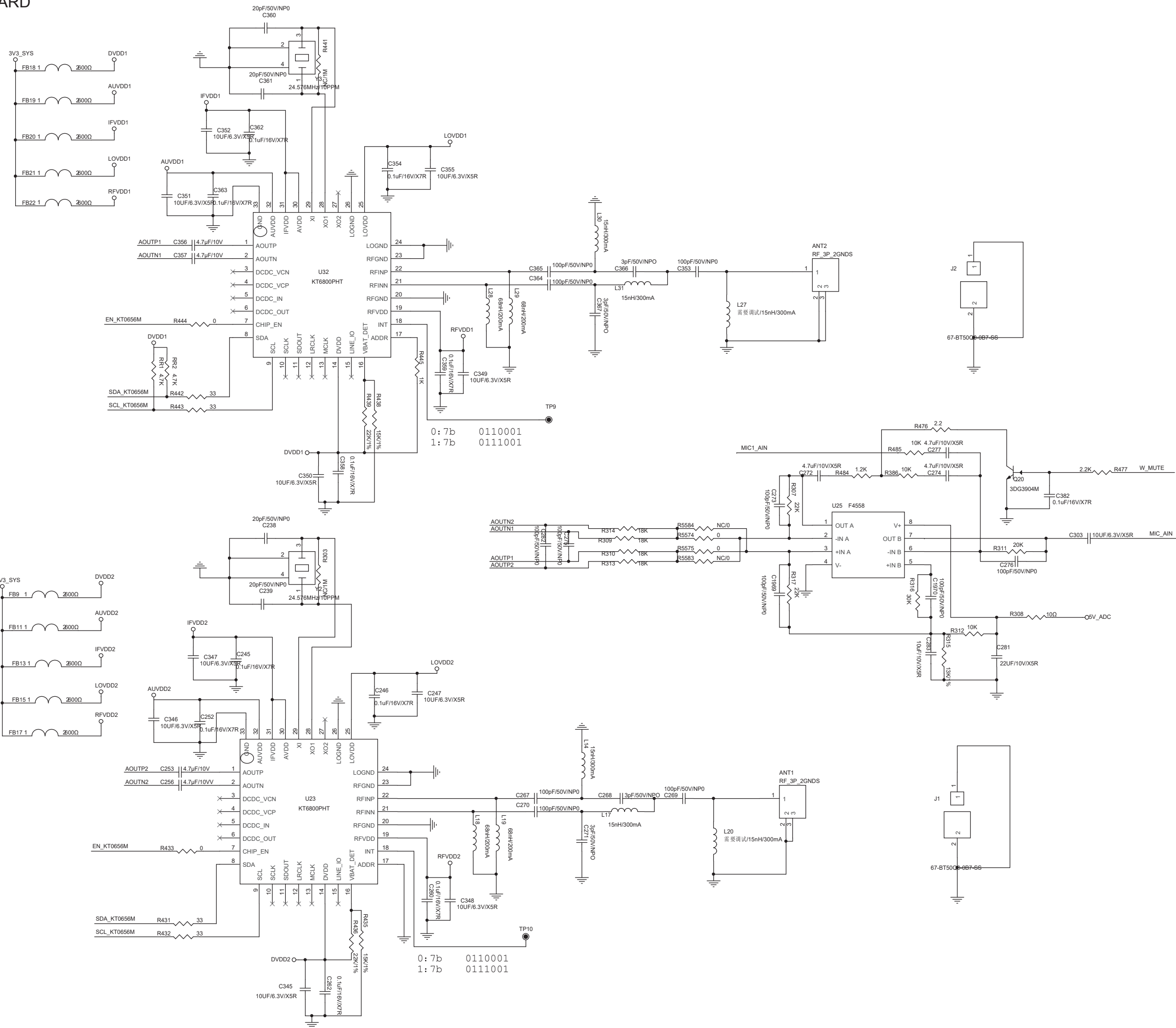
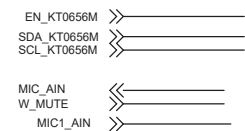




CIRCUIT DIAGRAM - MAIN BOARD



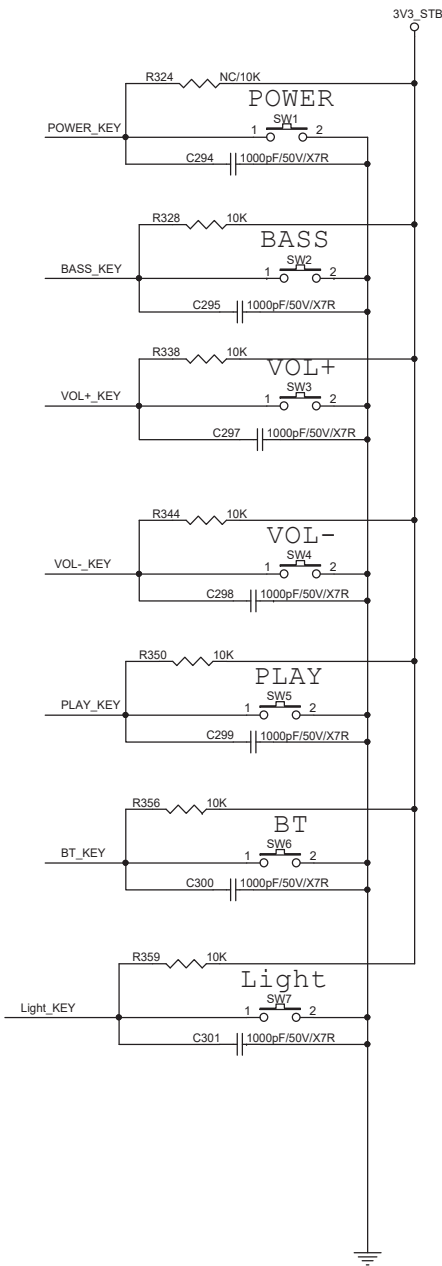
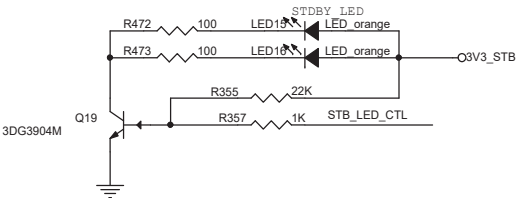
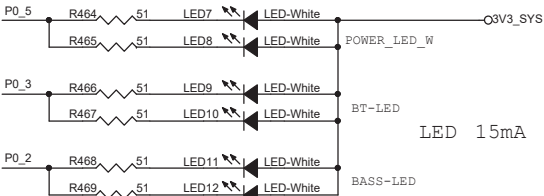
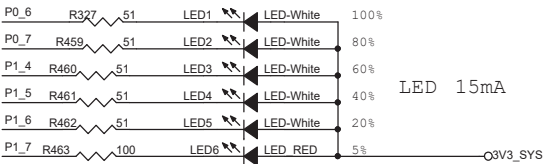
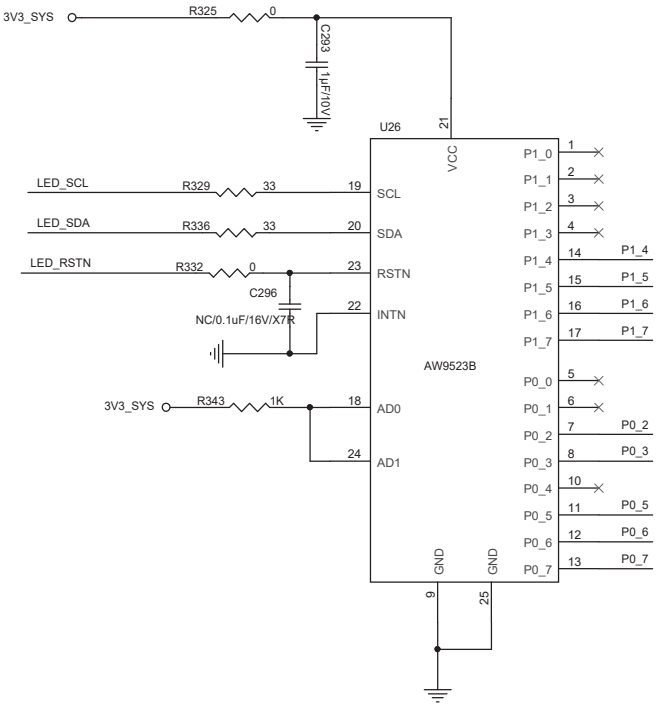
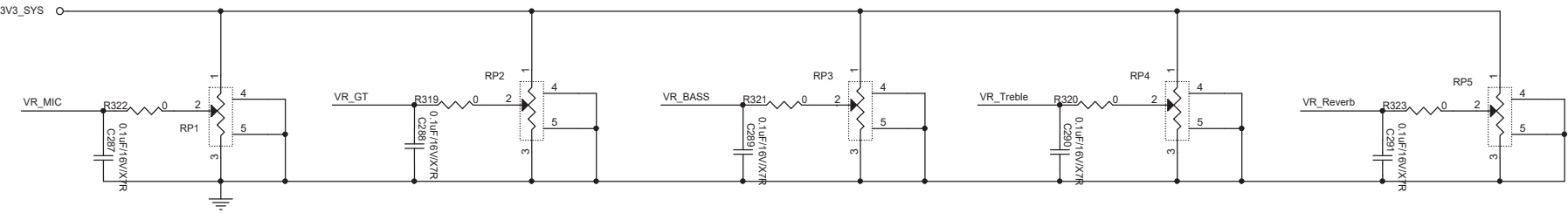
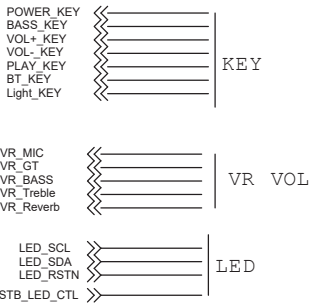
## CIRCUIT DIAGRAM - MAIN BOARD



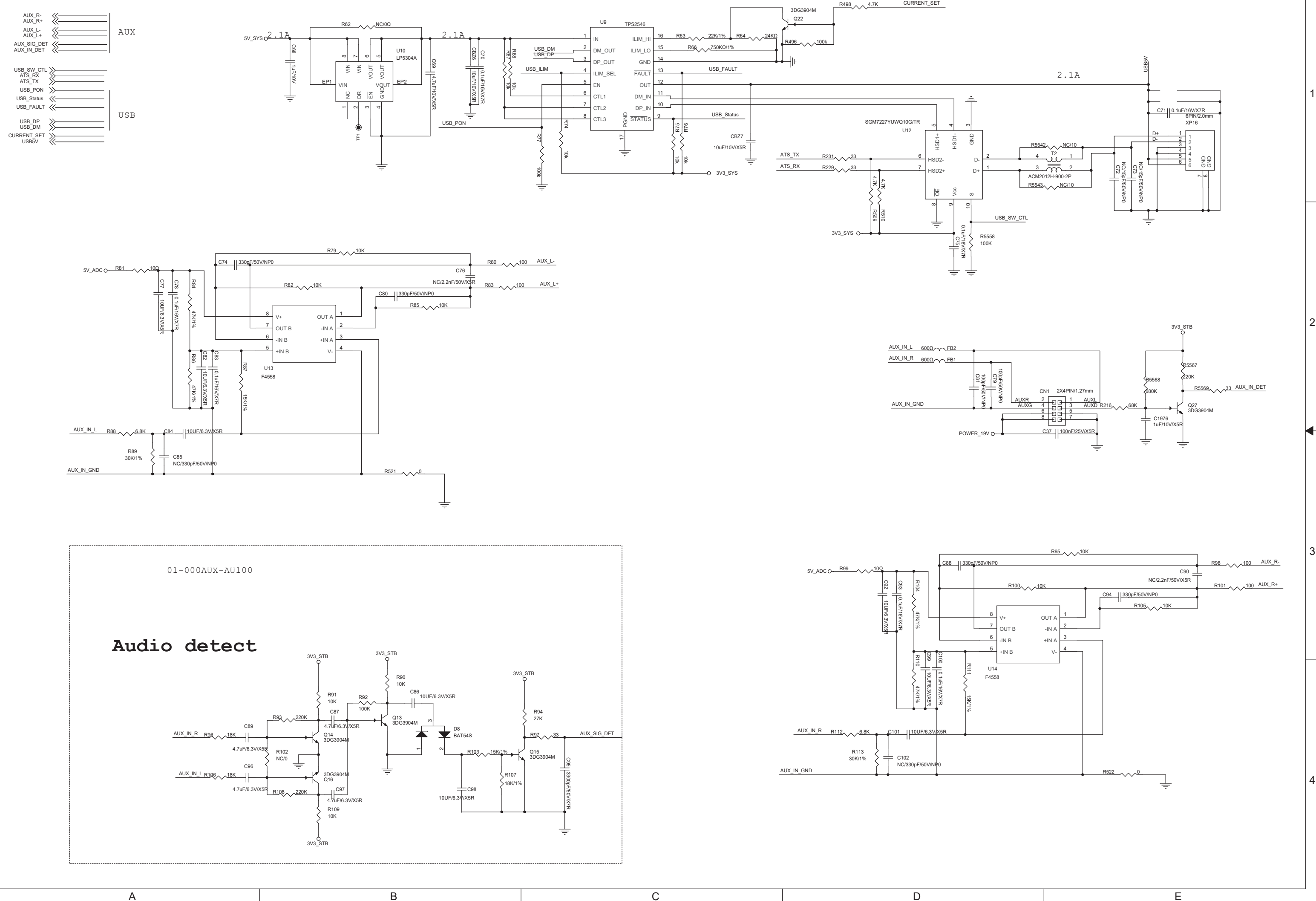
0: 7b	0110001
1: 7b	0111001

```
0: 7b      0110001
1: 7b      0111001
```

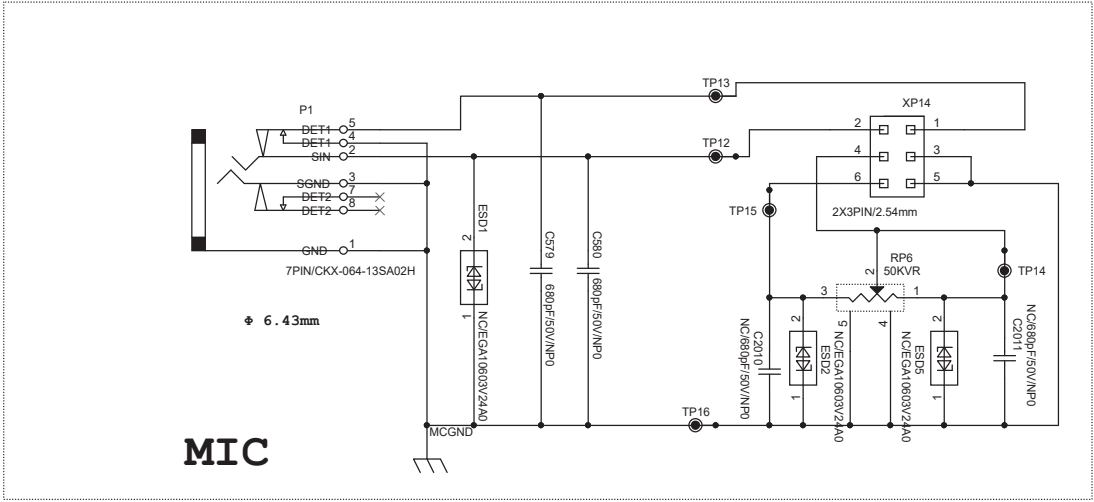
CIRCUIT DIAGRAM - MAIN BOARD



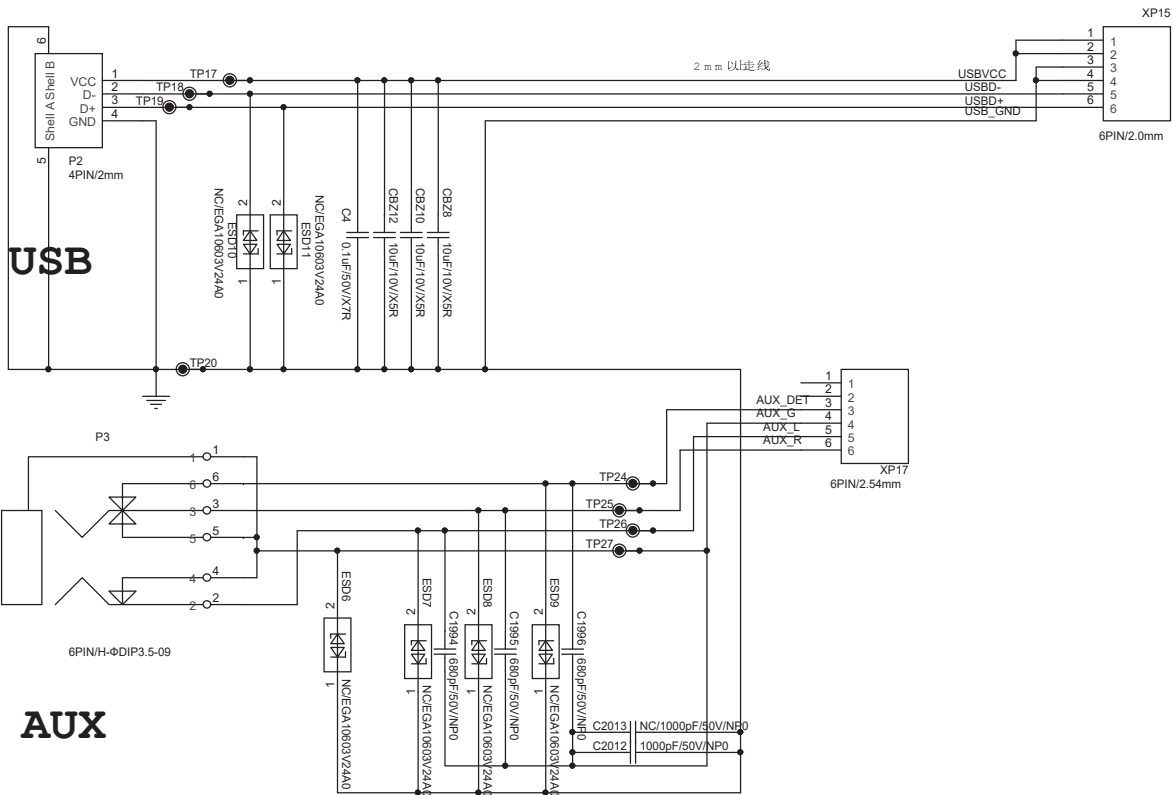
CIRCUIT DIAGRAM - MAIN BOARD





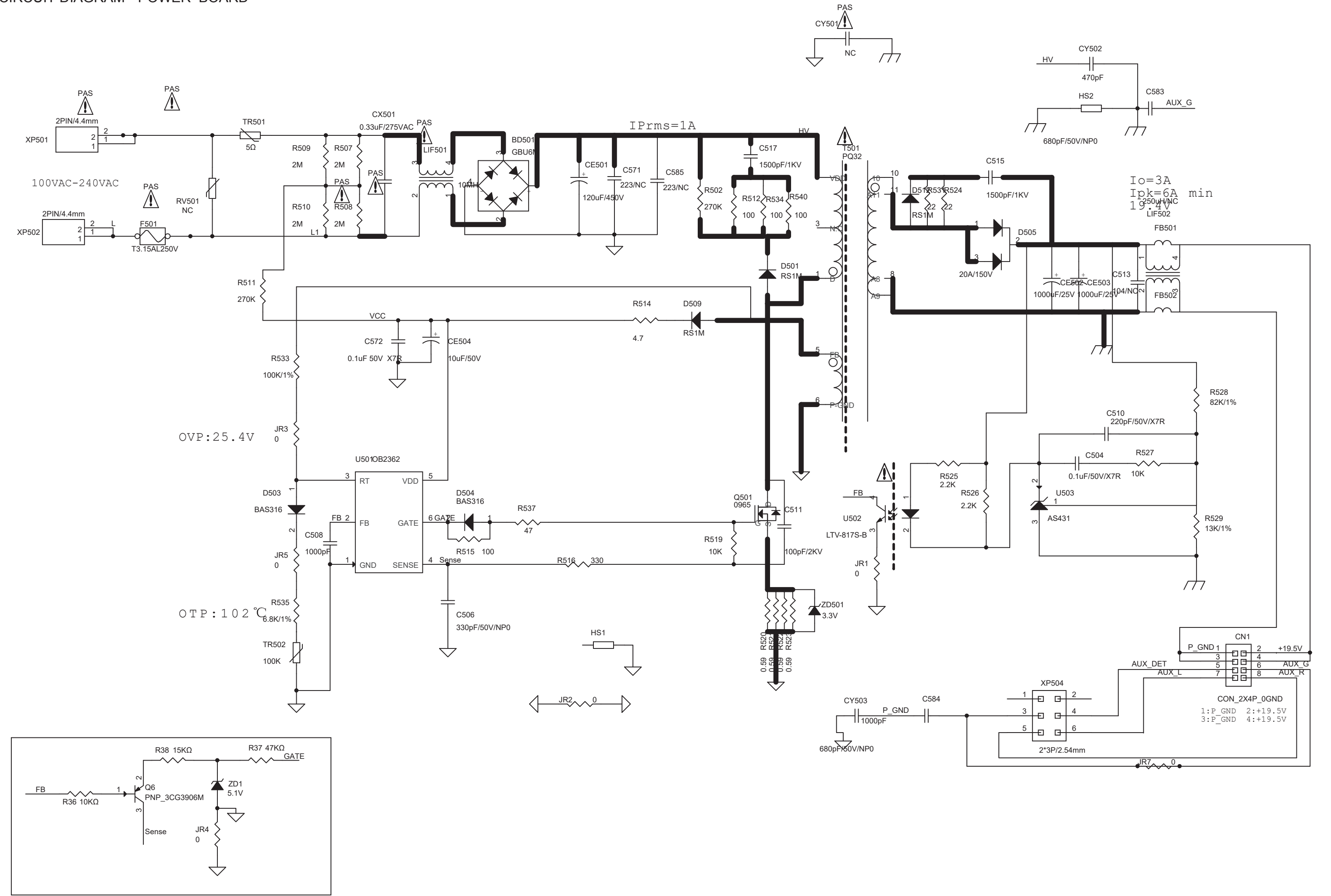


MIC BOARD



USB&AUX BOARD

CIRCUIT DIAGRAM - POWER BOARD



A

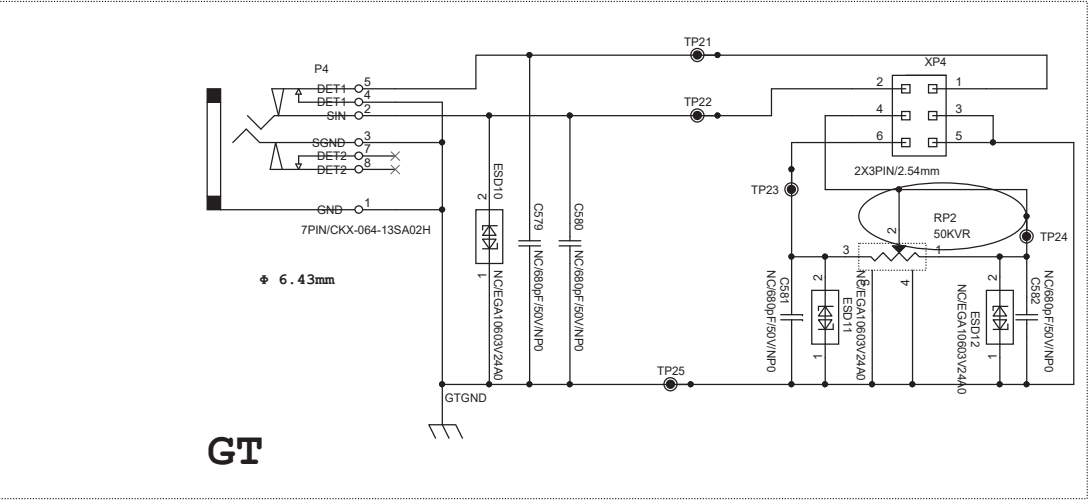
B

C

D

E

CIRCUIT DIAGRAM - GUITAR BOARD



GT BOARD

A

B

C

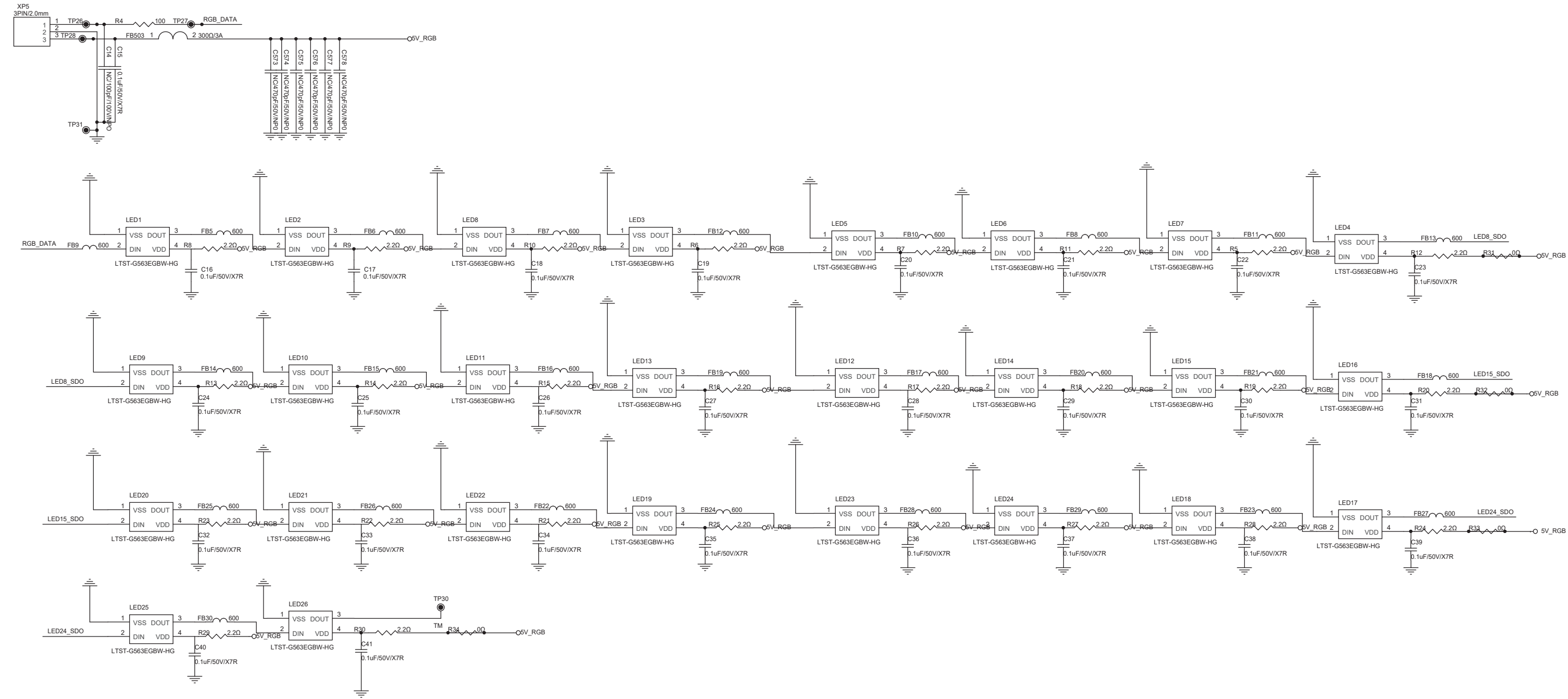
D

E



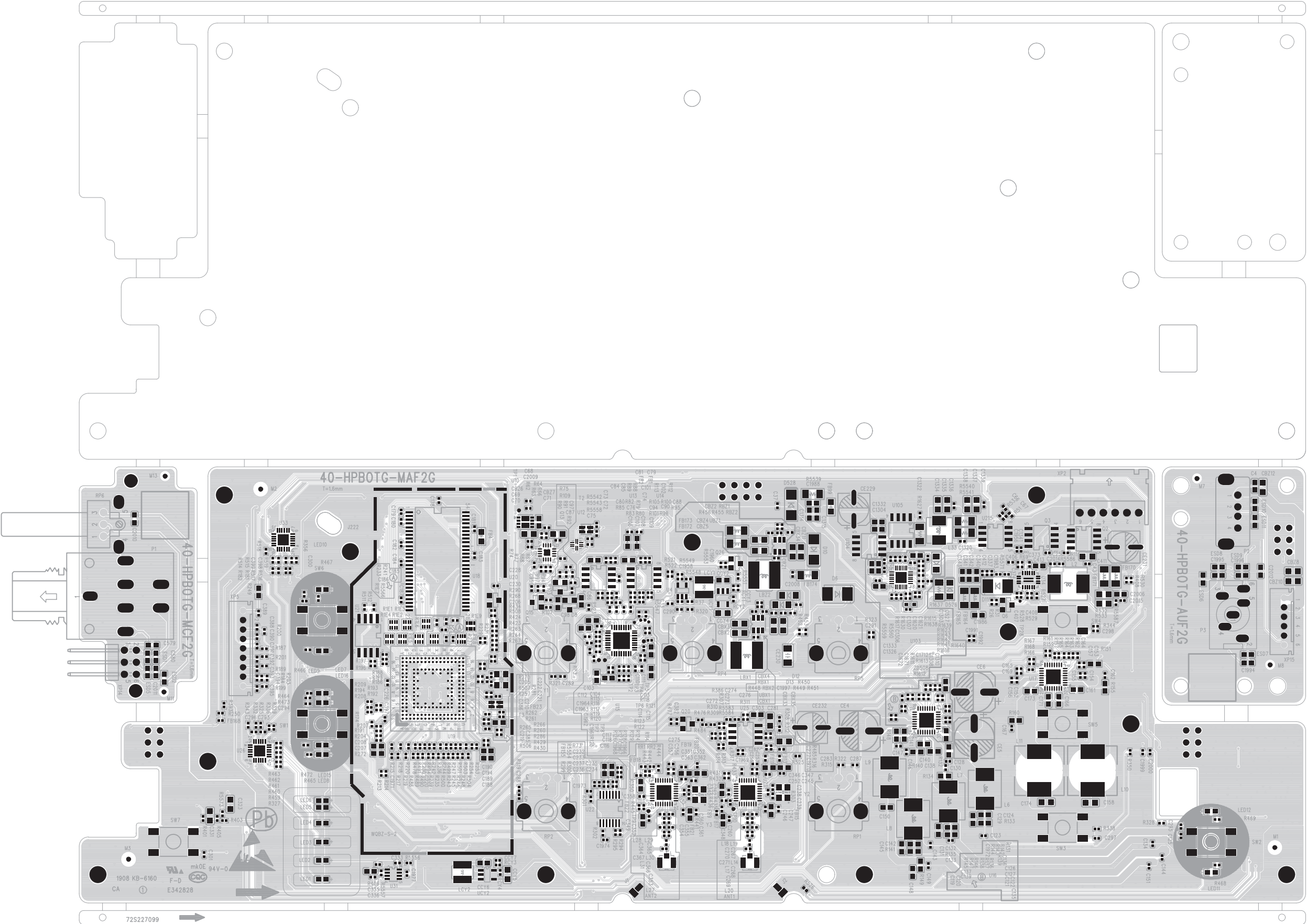
CIRCUIT DIAGRAM - RING BOARD

RGB TO MAIN BOARD

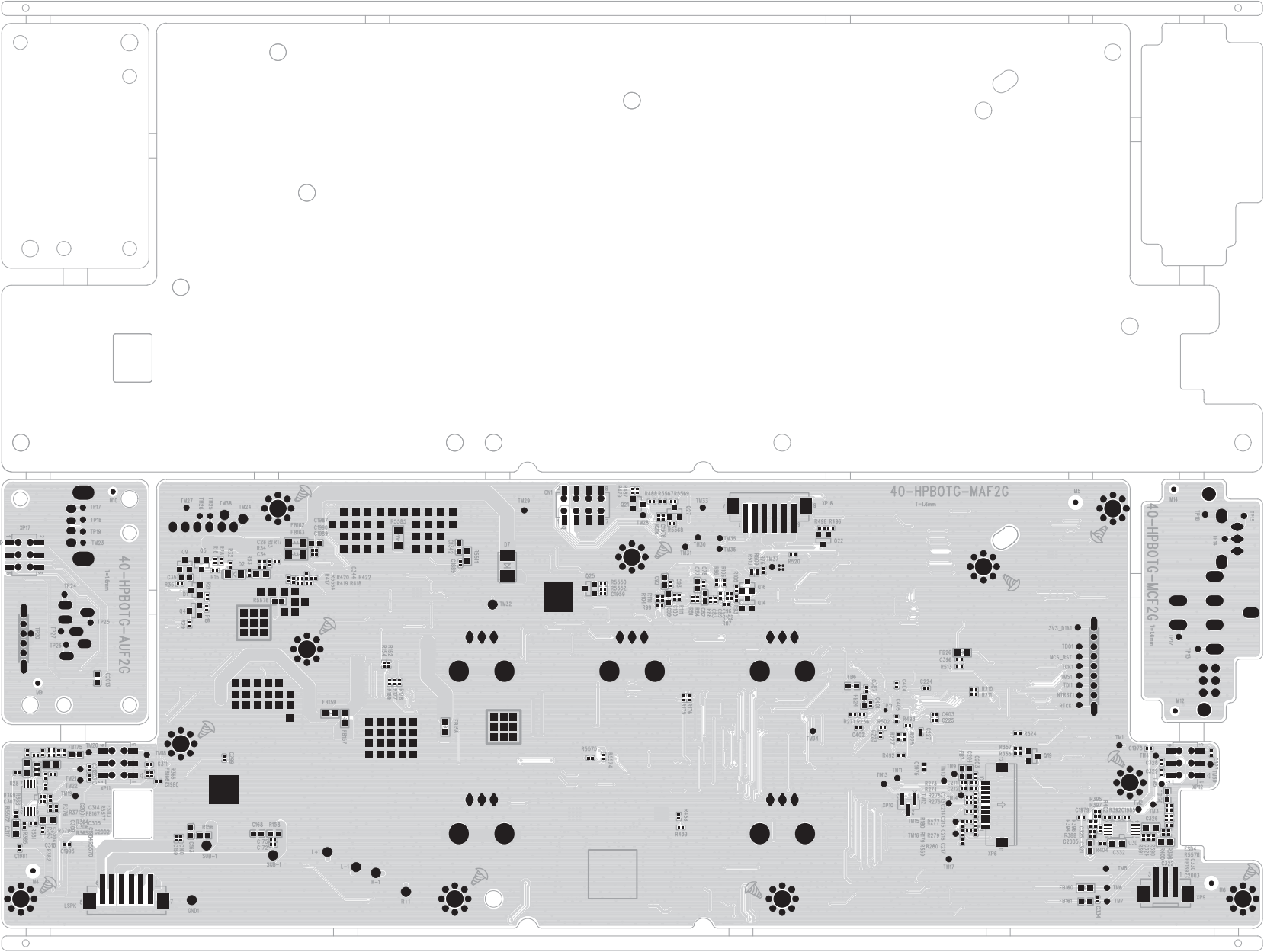


LED BOARD

MAIN&MIC&AUDIO PCB LAYOUT (TOP)



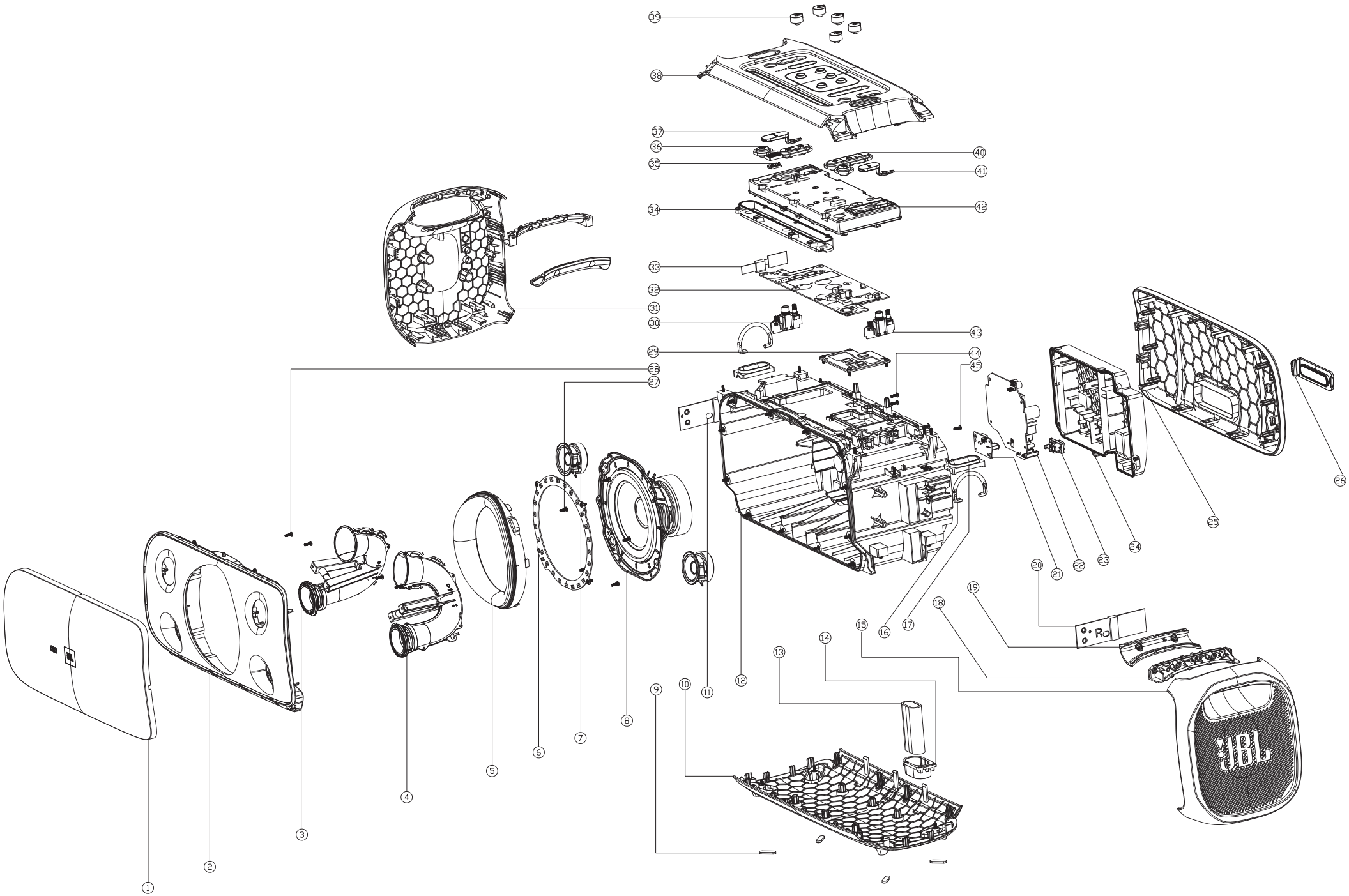
MAIN&MIC&AUDIO PCB LAYOUT (BOTTOM)





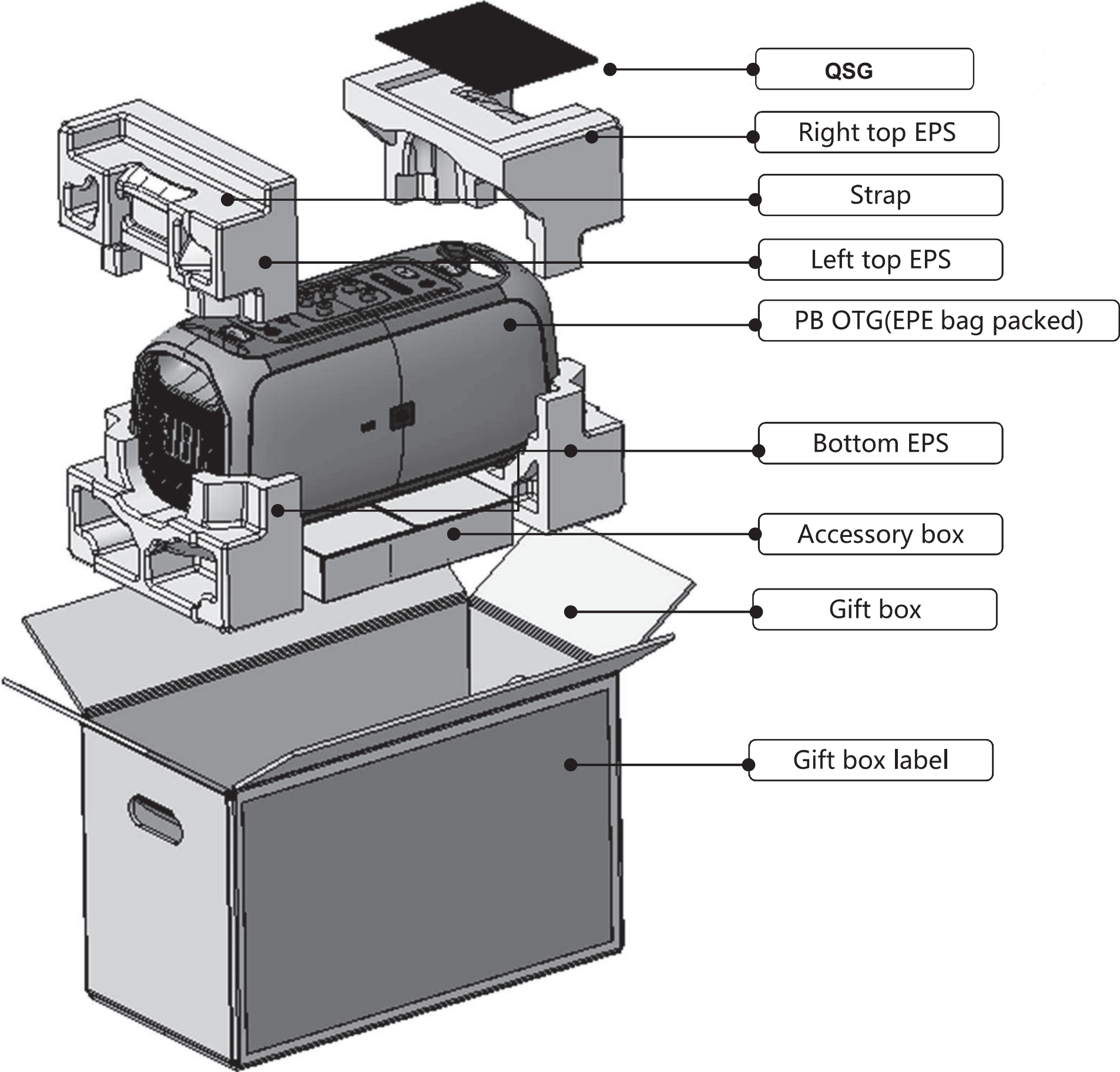






Part Number	SAP Description	Usage	UoM	Pos. No.
08-HPBOTG-FC0S	FRONT GRILLE ASSY	1	EA	1,2,5
08-HMPGP0-XX0B1S	DUCT ASSY	2	EA	3,4
08-HPBOTG-LD0S	LAMP RING	1	EA	6
08-025020-06006	2INCH SPEAKER	2	EA	7
08-055040-03002	5.25INCH SPEAKER	1	EA	8
59-435410-000B1	RUBBER FEET	4	EA	9
08-HMPGB1-XX0B1S	BOTTOM COVER	1	EA	10
54-438010-000B1	L MIC BELT	1	EA	11
08-HPBOTG-QC0S	MAIN BODY ASSY	1	EA	12,16,17
49-722475-BAT2-M	LI-ION BATTERY	1	EA	13
08-HMPGG1-0UNS	BATTERY COVER	1	EA	14
08-HPBOTG-RS0S	R SIDE COVER	1	EA	15,18,19
54-438020-000B1	R MIC BELT	1	EA	20
08-HPBOTG-AU0S	AUDIO BOARD	1	EA	21
08-HPBOTG-PW0S	POWER BOARD	1	EA	22
47-PWS131-XX0-M	AC ASSY	1	EA	23
08-HMPGW1-0UAB1S	POWER BOARD COVER	1	EA	24
08-HPBOTG-PH0	PVC STENT ASSY	1	EA	25
59-435340-000B1	I/O COVER	1	EA	26
67-435310-0A0	MAIN BOARD RADIATOR	1	EA	29
08-HPBOTG-GT0S	GUITAR BOARD	1	EA	30
08-HPBOTG-LS0S	L SIDE COVER	1	EA	31,18,19
08-HPBOTG-MA0S	MAIN BOARD	1	EA	32
07-BTM881-1QA	WIRELESS MODULE	1	EA	33
08-HMPGT1-XX0B1S	TOP COVER	1	EA	34,35,38
59-435370-000B1	POWER BUTTON	1	EA	36
59-435390-000B1	MIC COVER1	1	EA	37
56-HMPGK1-0HAB1S	MIC BUTTON	5	EA	39
59-435380-000B1	VOLUME BUTTON	1	EA	40
59-435400-000B1	MIC COVER2	1	EA	41
08-HMPGM1-0UAS	MAIN BOARD COVER	1	EA	42
08-HPBOTG-MC0S	MIC BOARD	1	EA	43

PACKAGING EXPLODED VIEW





**JBL PARTYBOX ON THE GO (TL) - SPARE PARTS LIST V1.1**

Pos. No.	Part Number	SAP Description	Usage	UoM
1,2,5	08-HPBOTG-FC0S	FRONT GRILLE ASSY PBOTG TL	1	EA
3,4	08-HMPGP0-XX0B1S	DUCT ASSY PBOTG TL	2	EA
6	08-HPBOTG-LD0S	LAMP RING PBOTG TL	1	EA
7	08-025020-06006	2INCH SPEAKER PBOTG TL	2	EA
8	08-055040-03002	5.25INCH SPEAKER PBOTG TL	1	EA
9	59-435410-000B1	RUBBER FEET PBOTG TL	4	EA
10	08-HMPGB1-XX0B1S	BOTTOM COVER PBOTG TL	1	EA
11	54-438010-000B1	L MIC BELT PBOTG TL	1	EA
12,16,17	08-HPBOTG-QC0S	MAIN BODY ASSY PBOTG TL	1	EA
13	49-722475-BAT2-M	LI-ION BATTERY PBOTG TL	1	EA
14	08-HMPGG1-0UNS	BATTERY COVER PBOTG TL	1	EA
15,18,19	08-HPBOTG-RS0S	R SIDE COVER PBOTG TL	1	EA
20	54-438020-000B1	R MIC BELT PBOTG TL	1	EA
21	08-HPBOTG-AU0S	AUDIO BOARD PBOTG TL	1	EA
22	08-HPBOTG-PW0S	POWER BOARD PBOTG TL	1	EA
23	47-PWS131-XX0-M	AC ASSY PBOTG TL	1	EA
24	08-HMPGW1-0UAB1S	POWER BOARD COVER PBOTG TL	1	EA
25	08-HPBOTG-PH0	PVC STENT ASSY PBOTG TL	1	EA
26	59-435340-000B1	I/O COVER PBOTG TL	1	EA
29	67-435310-0A0	MAIN BOARD RADIATOR PBOTG TL	1	EA
30	08-HPBOTG-GT0S	GUITAR BOARD PBOTG TL	1	EA
31,18,19	08-HPBOTG-LS0S	L SIDE COVER PBOTG TL	1	EA
32	08-HPBOTG-MA0S	MAIN BOARD PBOTG TL	1	EA
33	07-BTM881-1QA	WIRELESS MODULE PBOTG TL	1	EA
34,35,38	08-HMPGT1-XX0B1S	TOP COVER PBOTG TL	1	EA
36	59-435370-000B1	POWER BUTTON PBOTG TL	1	EA
37	59-435390-000B1	MIC COVER1 PBOTG TL	1	EA
39	56-HMPGK1-0HAB1S	MIC BUTTON PBOTG TL	5	EA
40	59-435380-000B1	VOLUME BUTTON PBOTG TL	1	EA
41	59-435400-000B1	MIC COVER2 PBOTG TL	1	EA
42	08-HMPGM1-0UAS	MAIN BOARD COVER PBOTG TL	1	EA
43	08-HPBOTG-MC0S	MIC BOARD PBOTG TL	1	EA
	02-UMI033-XX0	MIC 657-659MHZ EU/CN/AU/AM/RU/BR/AS2 PBOTG	1	EA
	02-UMI025-XX0	MICROPHONE A 915-920MHZ AR PBOTG	1	EA
	02-UMI034-XX0	MICROPHONE B 659-661MHZ CN/AU/AS2 PBOTG	1	EA
	02-UMI024-XX0	MICROPHONE A 925-927MHZ KO PBOTG	1	EA
	02-UMI023-XX0	MICROPHONE B 927-929MHZ KO PBOTG	1	EA
	02-UMI032-XX0	MICROPHONE A 748.3-748.9MHZ TAIWAN PBOTG	1	EA
	02-UMI031-XX0	MICROPHONE B 750-751MHZ TAIWAN PBOTG	1	EA
	54-438030-000B1	STRAP PBOTG TL	1	EA
	54-432280-000B1	MICROPHONE ENVELOPE BAG PBOTG TL	1	EA
	76-436030-0ATB2	GIFT BOX EU PBOTG TL	1	EA
	76-436030-0ATB1	GIFT BOX AM PBOTG TL	1	EA
	76-436030-0ATB8	GIFT BOX RU PBOTG TL	1	EA
	76-436030-0ATB6	GIFT BOX CN PBOTG TL	1	EA
	76-436030-0ATB5	GIFT BOX BR PBOTG TL	1	EA
	76-436030-0ATB4	GIFT BOX ARGENTINA PBOTG TL	1	EA
	76-436030-0ATB3	GIFT BOX KO/AU/TAIWAN PBOTG TL	1	EA



	51-D70150-0AR08-M	POWER CORD 1.5M UK PBOTG TL	1	EA
	51-D71500-0CR08-M	POWER CORD 1.5M EP/RU PBOTG TL	1	EA
	51-G70150-0GR08-M	POWER CORD 1.5M CN PBOTG TL	1	EA
	51-D71500-01R08-M	POWER CORD 1.5M BR PBOTG TL	1	EA
	51-B8B150-0LR08-M	POWER CORD 1.5M AM/ARGENTINA PBOTG TL	1	EA
	51-D71500-0KR08-M	POWER CORD 1.5M KO PBOTG TL	1	EA
	51-D71500-0DR08-M	POWER CORD 1.5M THA PBOTG TL	1	EA
	51-D71500-0PR08-M	POWER CORD 1.5M AU PBOTG TL	1	EA
	46-CC028T-06XF1	CABLE 6P 280mm PBOTG TL	1	EA
	46-FF022T-06XF1	CABLE 6P 220mm PBOTG TL	1	EA
	46-FL040T-06X	SPEAKER WIRE 6P PBOTG TL	1	EA
	46-HH012C-10AVF1	FFC CABLE 10P 120mm PBOTG TL	1	EA
	47-ANT604-XX2	ANTENNA L=370mm PBOTG TL	2	EA

# REVISION LIST

## Version 1.0

\* Initial release for JBL ÚĚVŮŮY ON-THE-GO. 2021-Á4

## Version 1.1

\* Correct Microphones and remove India's version. 2021-8Á